

# Victoria Bay

Quality products for everyday needs.

NOW AVAILABLE WITH THE

**PLUS**<sup>TM</sup>

LABEL SYSTEM

CAUTION  
WET FLOOR



CLEANING PRODUCT CATALOG

<b>AIR CARE</b>	<b>4</b>
<b>ALL PURPOSE</b>	<b>4-6</b>
<b>AUTO</b>	<b>6</b>
<b>HD DEGREASERS</b>	<b>7</b>
<b>DISINFECTANTS</b>	<b>8</b>
<b>FLOOR CARE</b>	<b>9 - 10</b>
<b>HAND CLEANERS</b>	<b>11 - 12</b>
<b>RESTROOM</b>	<b>12 - 13</b>
<b>KITCHEN</b>	<b>14 - 17</b>
<b>WAREWASH</b>	<b>17 - 18</b>
<b>BREWERY</b>	<b>19</b>
<b>LAUNDRY</b>	<b>19 - 21</b>
<b>ESP</b>	<b>22 - 23</b>
<b>CMS</b>	<b>23 - 25</b>
<b>EDS</b>	<b>26 - 27</b>
<b>GREENSAFE</b>	<b>28 - 30</b>
<b>CARPET CARE</b>	<b>31</b>

# **Victoria Bay**

*Quality products for everyday needs.*

Welcome to Victoria Bay, where sourcing your professional cleaning chemicals has been simplified.

Victoria Bay offers an extensive line of the highest quality products to meet the unique needs of each customer. The new Greensafe line of chemicals supports green building roadmaps including the LEED rating system.

For outstanding performance, service, value, and a 100% satisfaction guarantee, choose Victoria Bay quality products for your everyday needs.



# Understanding the



LABEL SYSTEM

## in 4 Easy Steps:



**1**

### Product Type

Indicates product name and usage.

**2**

### Numbered Steps

Easy to follow numbered steps.

**3**

### Icons

Visually show what to do in each step.

**4**

### Icon Descriptor

Multiple languages explaining each step.

### Capri - Lemon

- Eliminates noxious odors
- Crisp lemon fragrance

**Color:** Yellow      **pH Range:** 6.5 - 7.0  
**Fragrance:** Lemon      **Dilution:** RTU

order no:  
**C00001**      **4 / 1 gal**



### Neutra - Odor

- Powerful odor destroying molecules
- Perfect for extreme odors

**Color:** Amber      **pH Range:** 6.5 - 7.0  
**Fragrance:** Clean      **Dilution:** RTU

order no:  
**C00140**      **12 / 1 qt**



### Capri - Wild Cherry

- Immediate air quality improvement
- Pleasant cherry fragrance

**Color:** Red      **pH Range:** 6.5 - 7.0  
**Fragrance:** Cherry      **Dilution:** RTU

order no:  
**C00163**      **4 / 1 gal**



### Capri Original Odor Neutralizer

- Destroys odors at their source
- Great smoke odor eliminator

**Color:** Yellowish      **pH Range:** 6.5 - 7.0  
**Fragrance:** Citrus      **Dilution:** RTU

order no:  
**C00161**      **6 / 1 qt**  
**C00166**      **12 / 1 qt**  
**C00167**      **4 / 1 gal**



### Capri - Green Apple

- Clean green apple scent
- Immediate air quality improvement

**Color:** Green      **pH Range:** 6.5 - 7.0  
**Fragrance:** Apple      **Dilution:** RTU

order no:  
**C00168**      **12 / 1 qt**



### Floral Malodor Neutralizer

- Pleasant long lasting, fresh fragrance
- Versatile applications

**Color:** Colorless      **pH Range:** 7.0 - 7.5  
**Fragrance:** Fresh      **Dilution:** RTU

order no:  
**C00174**      **12 / 1 qt**  
**C00175**      **4 / 1 gal**



### Chute & Dumpster Odor Neutralizer

- Eliminates noticeable odors quickly
- Bio-active formula

**Color:** Green      **pH Range:** 7.0 - 7.5  
**Fragrance:** Citronella      **Dilution:** 2 oz / gal

order no:  
**A00134**      **4 / 1 qt**  
**A00133**      **4 / 1 gal**



### Spray & Wipe Cleaner - RTU

- Non-butyl formulation, no choking fumes
- Superior cleaning power

**Color:** Light Green      **pH Range:** 11.5 - 12.0  
**Fragrance:** Citrus      **Dilution:** RTU

order no:  
**B00110**      **12 / 1 qt**



### RD - Pine Cleaner

- All purpose cleaner
- Clean pine fragrance

**Color:** Yellow      **pH Range:** 9.0 - 10.0  
**Fragrance:** Pine      **Dilution:** 1.5 - 6.0 oz / gal

order no:  
**C00160**      **4 / 1 gal**



### Pine Deodorant

- All purpose cleaner
- Clean pine fragrance

**Color:** Yellow      **pH Range:** 12.0 - 12.4  
**Fragrance:** Pine      **Dilution:** 2 - 4.0 oz / gal

order no:  
**C00195**      **4 / 1 gal**  
**C00200**      **5 gal**





## Super Clean

- Cleans/deodorizes all hard surfaces, no rinse required
- Non filming, with a lingering lavender fragrance

**Color:** Purple      **pH Range:** 7.5 - 8.0  
**Fragrance:** Lavender      **Dilution:** 2 oz / gal

order no:  
**C00245**      **4 / 1 gal**



## OxyOrange RTU

- Cleans, whitens and brightens
- One product, many uses

**Color:** Colorless      **pH Range:** 2.0 - 2.5  
**Fragrance:** Orange      **Dilution:** RTU

order no:  
**C99938**      **12 / 1 qt**



## Bulldozer APC - RTU

- Tackles a wide variety of soils
- Aggressive spray and wipe formula

**Color:** Yellow      **pH Range:** 12.0 - 12.5  
**Fragrance:** Lemon      **Dilution:** RTU

order no:  
**D01016**      **12 / 1 qt**  
**D00988**      **4 / 1 gal**  
**D01017**      **55 gal**



## RD - All Purpose Cleaner

- Concentrated neutral cleaner
- Cleans and deodorizes in one step

**Color:** Pink      **pH Range:** 8.0 - 8.5  
**Fragrance:** Lemon      **Dilution:** 1 - 8 oz / gal

order no:  
**D00993**      **4 / 1 gal**  
**D01025**      **5 gal**



## Neutral All Purpose Cleaner

- Highly concentrated
- Cleans finished floors and walls

**Color:** Pink      **pH Range:** 9.5 - 10.0  
**Fragrance:** Sweet      **Dilution:** 1 - 8 oz / gal

order no:  
**D01011**      **4 / 1 gal**



## Blue All Purpose Cleaner

- Non-butyl
- Removes grease and oil from washable surfaces

**Color:** Dark Blue      **pH Range:** 11.5 - 12.0  
**Fragrance:** Citrus      **Dilution:** 1 - 4 oz / gal

order no:  
**D01013**      **4 / 1 gal**



## Orange Spray & Wipe Cleaner - RTU

- Fast drying, non-streaking
- Formulated with natural citrus solvents

**Color:** Orange      **pH Range:** 11.5 - 12.0  
**Fragrance:** Orange      **Dilution:** RTU

order no:  
**D01014**      **12 / 1 qt**



## Premium Pine Cleaner

- Cleans and deodorizes floors, walls and toilets
- No rinse formula-pine oil cleaning action

**Color:** Orange      **pH Range:** 10.5 - 11.0  
**Fragrance:** Pine      **Dilution:** 2 - 4 oz / gal

order no:  
**D01030**      **4 / 1 gal**



## Cinch APC

- Cleans and deodorizes
- Pleasant pine fragrance

**Color:** Off-White      **pH Range:** 10.0 - 10.5  
**Fragrance:** Pine      **Dilution:** 6 oz / gal

order no:  
**D01309**      **4 / 1 gal**



## U.S. Mint Neutral Cleaner

- Multi-purpose neutral cleaner
- Does not dull floor finish

**Color:** Green      **pH Range:** 9.5 - 10.0  
**Fragrance:** Mint      **Dilution:** 2.0 - 8.0 oz / gal

order no:  
**D01312**      **5 gal**



## RD - Glass Cleaner

- Dries quickly
- One step cleaning

**Color:** Light Blue      **pH Range:** 5.5 - 6.0  
**Fragrance:** None      **Dilution:** RTU

order no:  
**F00013**      **12 / 1 qt**  
**F00005**      **4 / 1 gal**  
**F00013**      **5 gal**



## Alcohol Glass Cleaner

- Alcohol fortified, ammonia free
- One wipe, fast-drying formula



**Color:** Light Blue      **pH Range:** 9.5 - 10.0  
**Fragrance:** Clean      **Dilution:** RTU

order no:  
**F00015**      **12 / 1 qt**  
**F00008**      **4 / 1 gal**  
**F00014**      **5 gal**



### Ammoniated Glass Cleaner

- Non-streaking
- Pleasant fresh bouquet fragrance

**Color:** Light Blue      **pH Range:** 10.0 - 10.5  
**Fragrance:** Bouquet      **Dilution:** RTU

order no:  
**F00016**                                      12 / 1 qt  
**F00011**                                      4 / 1 gal



### Concentrated Glass Cleaner

- Contains no ammonia or amines
- Non-streaking cleaner

**Color:** Dark Blue      **pH Range:** 11.5 - 12.0  
**Fragrance:** Floral      **Dilution:** 6 oz / gal

order no:  
**F00018**                                      4 / 1 gal



### Glass Cleaner Ammoniated

- Non-streaking cleaner
- Dries quickly

**Color:** Blue      **pH Range:** 11.0 - 11.5  
**Fragrance:** Ammonia      **Dilution:** RTU

order no:  
**F00044**                                      12 / 1 qt  
**F00045**                                      4 / 1 gal



### Lavender All-Purpose Cleaner

- Free rinsing & versatile
- Super concentrated

**Color:** Purple      **pH Range:** 6.0 - 6.5  
**Fragrance:** Lavender      **Dilution:** RTU or 6oz / gal.

order no:  
**F00084**                                      4 / 1 gal  
**D21102**                                      5 gal



### Multisurface Liquid Cleaner & Polish

- Neutral, non-staining formula
- Contains silicone for surface protection

**Color:** Opaque White      **pH Range:** 8.0 - 8.5  
**Fragrance:** Lemon      **Dilution:** RTU

order no:  
**F00126**                                      12 / 1 qt



### Car Wash & Wax

- Free rinsing
- Highly concentrated

**Color:** Pink      **pH Range:** 9.5 - 10.0  
**Fragrance:** Cherry      **Dilution:** 1 oz / gal

order no:  
**A00050**                                      4 / 1 gal  
**A00051**                                      5 gal  
**A00051**                                      55 gal



### Vinyl Tire Dressing

- Water repellent
- Wipes clean in one application

**Color:** Blue      **pH Range:** n/a  
**Fragrance:** Watermelon      **Dilution:** RTU

order no:  
**A00060**                                      4 / 1 gal



### Auto Silicone Renovator

- Helps prevent cracking
- Provides long-term gloss and protection

**Color:** White      **pH Range:** 8.0 - 8.5  
**Fragrance:** Lemon      **Dilution:** RTU

order no:  
**A00061**                                      4 / 1 gal



## Heavy Duty Concrete Cleaner

- Color indicator becomes fluorescent green
- Pleasant pine fragrance deodorizes

**Color:** Orange      **pH Range:** (1%) 12.0 - 12.5  
**Fragrance:** Pine      **Dilution:** 4 - 8 oz / gal

order no:  
**A00026**      **50 lb box**



## Premium Heavy Duty Degreaser

- Extremely versatile
- Will not harm soft metal surfaces

**Color:** Purple      **pH Range:** 12.5 - 13.0  
**Fragrance:** Sassafras      **Dilution:** 1 - 20 oz / gal

order no:  
**D01021**      **4 / 1 gal**  
**D01018**      **5 gal**  
**D00167**      **15 gal**  
**D01019**      **55 gal**



## High Performance Cleaner Degreaser

- Aggressive cleaner
- Versatile and cost effective

**Color:** Red      **pH Range:** 13.0 - 13.5  
**Fragrance:** Characteristic      **Dilution:** Up to 4 oz / gal

order no:  
**D00975**      **4 / 1 gal**  
**D00976**      **55 gal**



## RD - HD Degreaser

- Non-flammable solvent
- Dissolves heavy deposits

**Color:** Red      **pH Range:** 12.0 - 12.5  
**Fragrance:** None      **Dilution:** 2.5 - 64.0 oz / gal

order no:  
**D00998**      **4 / 1 gal**  
**D00999**      **55 gal**



## 90% Natural Citrus Degreaser

- Cleans tough soils
- Free rinsing and dilutable

**Color:** Orange      **pH Range:** n/a  
**Fragrance:** Citrus      **Dilution:** Up to 64 oz / gal

order no:  
**D01008**      **4 / 1 gal**



## Citrus Cleaner & Degreaser

- Fast acting
- Superior grease cutting properties

**Color:** Orange      **pH Range:** 13.0 - 13.5  
**Fragrance:** Orange      **Dilution:** 1 - 8 oz / gal

order no:  
**D01015**      **4 / 1 gal**  
**D01037**      **5 gal**  
**D01020**      **55 gal**



## Claws Heavy Duty Cleaner & Degreaser

- Spray and wipe formula
- Works on most washable surfaces

**Color:** Green      **pH Range:** 12.5 - 13.0  
**Fragrance:** Chemical      **Dilution:** Up to 25 oz / gal

order no:  
**D01313**      **2 / 2.5 gal**  
**D01314**      **55 gal**



## Spontaneous Emulsifier Cleaner

- Concentrated
- Superior cleaning ability

**Color:** Light Blue      **pH Range:** 13.0 - 14.0  
**Fragrance:** Characteristic      **Dilution:** 4 - 14 oz / gal

order no:  
**D01315**      **5 gal**  
**D01316**      **55 gal**



## Rust Remover

- Quickly removes rust stains
- Spray, brush or roll onto surfaces

**Color:** Colorless      **pH Range:** 4.5 - 5.0  
**Fragrance:** None      **Dilution:** Up to 128 oz / gal

order no:  
**L01185**      **4 / 1 gal**



### Lemon Detergent & Disinfectant

- Non-flammable solvent
- Dissolves heavy deposits

**Color:** Yellow      **pH Range:** 11.5 - 12.0  
**Fragrance:** Lemon      **Dilution:** 2 oz / gal

order no:  
**C00009**      4 / 1 gal  
**C00023**      5 gal  
**C00241**      55 gal



### Pine Disinfectant Cleaner

- Non-corrosive and non-staining
- Neutral pH

**Color:** Brown      **pH Range:** 6.5 - 7.0  
**Fragrance:** Pine      **Dilution:** 6 oz / gal

order no:  
**C00159**      4 / 1 gal



### Mint Disinfectant Cleaner

- Phosphate free, quaternary surfactant blend
- Kills germs in restrooms and showers

**Color:** Green      **pH Range:** 7.5 - 8.0  
**Fragrance:** Fresh Mint      **Dilution:** 4 oz / gal

order no:  
**C00173**      4 / 1 gal



### Disinfectant Spray Cleaner RTU

- Convenient, ready-to-use formula
- Kills blood-borne pathogens

**Color:** Colorless      **pH Range:** 11.5 - 12.0  
**Fragrance:** Lemon      **Dilution:** RTU

order no:  
**C00177**      12 / 1 qt  
**C00179**      4 / 1 gal



### Food Service Sanitizer

- EPA registered, quat based sanitizer
- For use in three-compartment sinks



**Color:** Colorless      **pH Range:** 7.0 - 7.5  
**Fragrance:** None      **Dilution:** ¼ oz / gal

order no:  
**C00180**      4 / 1 gal  
**C00181**      5 gal  
**C00737**      15 gal  
**C00188**      55 gal



### Neutral Cleaner & Disinfectant

- Cleans floors without harming finish
- Perfect for cloth or mop disinfecting

**Color:** Purple      **pH Range:** 7.5 - 8.0  
**Fragrance:** Floral      **Dilution:** 2 oz / gal

order no:  
**C00185**      4 / 1 gal



### Table Top Sanitizer - RTU

- Sanitizing spray and wipe
- Kills food related bacteria in 60 seconds

**Color:** Colorless      **pH Range:** 7.0 - 7.5  
**Fragrance:** None      **Dilution:** RTU

order no:  
**C00187**      12 / 1 qt



### Fresh Scent NDC

- Hospital grade disinfectant/cleaner/deodorizer
- Safe on plastic, vinyl, enamel and tile

**Color:** Blue      **pH Range:** 7.5 - 8.0  
**Fragrance:** Fresh & Clean      **Dilution:** 4 oz / gal

order no:  
**C00239**      4 / 1 gal



### Peroxide Disinfectant Cleaner

- Evaporates completely
- Cleans grout

**Color:** Colorless      **pH Range:** < 1.0  
**Fragrance:** None      **Dilution:** 1 - 2 oz / gal

order no:  
**D02030**      4 / 1 gal





## Floor Sealer

- Low viscosity, high coverage
- Compatible with all types of acrylic finishes

**Color:** White      **pH Range:** 8.0 - 8.5  
**Fragrance:** Characteristic      **Dilution:** RTU

order no:  
D00044      4 / 1 gal  
D00045      5 gal  
D20363      2 / 2.5 gal

**FLEXMAX**  
PACKAGING



## Urethane High Speed Finish & Sealer

- Shine that lasts and lasts
- Great with propane burnishing equipment

**Color:** White      **pH Range:** 8.0 - 8.5  
**Fragrance:** Characteristic      **Dilution:** RTU

order no:  
D00047      5 gal  
D20368      2 / 2.5 gal

**FLEXMAX**  
PACKAGING



## Non Ammoniated Floor Stripper

- Aggressive stripping action
- Emulsifies multiple coats

**Color:** Colorless      **pH Range:** >13.0  
**Fragrance:** None      **Dilution:** 26 - 64 oz / gal

order no:  
D00048      4 / 1 gal  
D00049      5 gal  
D20360      2 / 2.5 gal

**FLEXMAX**  
PACKAGING



## No Rinse Floor Stripper

- No harsh ammonia odor
- Quickly strips multiple layers of finish

**Color:** Colorless      **pH Range:** 13.5 - 14.0  
**Fragrance:** None      **Dilution:** 13 - 32 oz / gal

order no:  
D00050      4 / 1 gal  
D00051      5 gal  
D20361      2 / 2.5 gal

**FLEXMAX**  
PACKAGING



## 18% High Speed Floor Finish

- Seals and finishes in one step
- Unique polymer blend

**Color:** White      **pH Range:** 8.0 - 8.5  
**Fragrance:** Characteristic      **Dilution:** RTU

order no:  
D00052      4 / 1 gal  
D00053      5 gal  
D20367      2 / 2.5 gal

**FLEXMAX**  
PACKAGING



## Neutral Damp Mop Floor Cleaner

- No-rinse formula, does not leave a film
- For use in auto scrubbers and mop buckets

**Color:** Yellow      **pH Range:** 8.0 - 8.5  
**Fragrance:** Lemon      **Dilution:** 2 oz / gal

order no:  
D00080      4 / 1 gal  
D00055      5 gal



## Spray Buff - RTU

- Low or high speed equipment
- Pleasant lemon fragrance

**Color:** White      **pH Range:** 7.5 - 8.0  
**Fragrance:** Lemon      **Dilution:** RTU

order no:  
D00058      12 / 1 qt  
D00056      4 / 1 gal



## Knockout HS Floor Finish

- Super off-the-mop gloss
- For areas with minimal maintenance

**Color:** White      **pH Range:** 8.0 - 8.5  
**Fragrance:** Characteristic      **Dilution:** RTU

order no:  
D00057      5 gal  
D20366      2 / 2.5 gal

**FLEXMAX**  
PACKAGING



## 18% Floor Finish

- Quickly buffs to a high shine
- Easy fast application

**Color:** White      **pH Range:** 8.0 - 8.5  
**Fragrance:** Characteristic      **Dilution:** RTU

order no:  
D00061      5 gal  
D20364      2 / 2.5 gal

**FLEXMAX**  
PACKAGING



## 25% Floor Finish

- Builds gloss quickly
- For low speed or high speed machines

**Color:** White      **pH Range:** 8.0 - 8.5  
**Fragrance:** Characteristic      **Dilution:** RTU

order no:  
D00064      4 / 1 gal  
D00065      5 gal  
D20365      2 / 2.5 gal

**FLEXMAX**  
PACKAGING



## Concentrated Restorer / Spray Buff

- Repair and replenish floor surfaces
- Mop on/buff off

**Color:** White      **pH Range:** 7.5 - 8.0  
**Fragrance:** Characteristic      **Dilution:** 1 - 2 oz / gal

order no:  
D00081      4 / 1 gal



## Concrete / Stone Sealer

- Water-based seal
- Brick, slate, quarry tile, resilient floors

**Color:** White      **pH Range:** 8.0 - 8.5  
**Fragrance:** Characteristic      **Dilution:** RTU

order no:  
D00083      4 / 1 gal



### Deep Scrub Floor Cleaner

- Top scrub and recoat applications
- Non-filming, pH optimized

**Color:** Blue      **pH Range:** 10.5 - 11.0  
**Fragrance:** Fresh      **Dilution:** Up to 16 oz / gal

order no:  
**D00084**      **4 / 1 gal**



### Water Base Wood Floor Cleaner

- Removes body oils and scuff marks
- Effectively tacks floor prior to applying finish

**Color:** Green      **pH Range:** 10.0 - 10.5  
**Fragrance:** None      **Dilution:** 4 - 6 oz / gal

order no:  
**D00085**      **4 / 1 gal**



### Damp Mop

- Maintains high gloss acrylic floor finishes
- No dulling film

**Color:** Colorless      **pH Range:** >13.0  
**Fragrance:** None      **Dilution:** 26 - 64 oz / gal

order no:  
**D00089**      **4 / 1 gal**



### Daylight Concentrated Neutral Cleaner

- Super concentrated
- Multipurpose floor cleaner

**Color:** Light Blue      **pH Range:** 7.0 - 8.0  
**Fragrance:** Floral      **Dilution:** 13 - 32 oz / gal

order no:  
**D01311**      **2 / 2.5 gal**



### Mega Stripper

- Fast acting mega stripping power
- Rinse free

**Color:** Colorless      **pH Range:** 12.0 - 12.5  
**Fragrance:** Lemon      **Dilution:** 11 - 32 oz / gal

order no:  
**D20362** **FLEXMAX**™      **2 / 2.5 gal**  
**G00318** **PACKAGING**      **5 gal**



## Select Floor Care Products Available In

# FLEXMAX™ PACKAGING

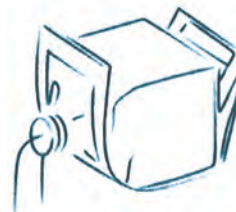
*FlexMax™ Packaging replaces bulky, clumsy buckets with a container that empties completely and collapses to nothing. Yet it's still durable, and portable thanks to built-in handles. Products in FlexMax™ Packaging are easy to use, convenient to store, and cost efficient to ship. They're durable, lightweight, collapse down flat.*



Sturdy, stable construction



Easy transport



Ergonomic design



Empties completely

### RD - Pink Hand Soap

- Soothing hand soap
- Excellent cleaning

**Color:** Pink      **pH Range:** 7.0 - 7.5  
**Fragrance:** Cherry      **Dilution:** RTU

order no:  
**L00011**      4 / 1 gal



### Honey Almond Hand Soap

- Leaves skin soft and smooth
- Soothing pearlized hand soap

**Color:** White Pearlized      **pH Range:** 7.5 - 8.0  
**Fragrance:** Honey Almond      **Dilution:** RTU

order no:  
**L00012**      4 / 1 gal



### White Hand Soap

- Contains no solvents
- Soothing hand soap

**Color:** White      **pH Range:** 7.0 - 7.5  
**Fragrance:** Cherry      **Dilution:** RTU

order no:  
**L00019**      4 / 1 gal



### Pink Lotion Hand Soap

- Thick, rich viscosity
- Pleasant cherry fragrance

**Color:** Pink      **pH Range:** 6.5 - 7.0  
**Fragrance:** Cherry      **Dilution:** RTU

order no:  
**L00028**      4 / 1 gal



### 15% Coconut Oil Hand Soap

- Natural emollients keep skin soft
- Free rinsing, even in hard water

**Color:** Yellow      **pH Range:** 9.0 - 9.5  
**Fragrance:** Coconut      **Dilution:** RTU

order no:  
**L00031**      4 / 1 gal



### Pearlized Hand Soap

- Thick, rich lather
- Soothes dry or abused skin

**Color:** Pink Pearlized      **pH Range:** 6.0 - 6.5  
**Fragrance:** Herbal Mint      **Dilution:** RTU

order no:  
**L00034**      4 / 1 gal



### Anti-Bacterial Hand Soap

- Extremely mild formula
- Extra protection against germs

**Color:** White      **pH Range:** 7.0 - 9.0  
**Fragrance:** Melon      **Dilution:** RTU

order no:  
**L00035**      4 / 1 gal



### Pink Hand Soap

- Rich, thick lather
- Pleasant cherry fragrance

**Color:** Pink      **pH Range:** 9.5 - 10.5  
**Fragrance:** Cherry      **Dilution:** RTU

order no:  
**L00087**      4 / 1 gal  
**L00088**      55 gal



### Body Wash

- Rich luxuriant lather
- Rinses clean, leaving skin clean and fresh

**Color:** Ocean Blue      **pH Range:** 6.0 - 6.5  
**Fragrance:** Tangerine Lemongrass      **Dilution:** RTU

order no:  
**L00210**      4 / 1 gal



### Shampoo

- Rich luxuriant lather
- Rinses clean, leaving hair looking great

**Color:** Orange      **pH Range:** 6.0 - 6.5  
**Fragrance:** Tangerine Lemongrass      **Dilution:** RTU

order no:  
**L00211**      4 / 1 gal



### Crystal Colorless Hand Soap

- Readily biodegradable
- Environmentally responsible choice      **UL 2784**

**Color:** Colorless      **pH Range:** 7.5 - 8.0  
**Fragrance:** Herbal Mint      **Dilution:** RTU

order no:  
**L05437**      4 / 1 gal



### Foam Hand Soap

- Thick, rich lather
- Rinses freely

**Color:** Blue      **pH Range:** 8.0 - 8.5  
**Fragrance:** Clean      **Dilution:** RTU

order no:  
**L05439**      4 / 1 gal



**Soft Touch Antibacterial Soap**

- Mild to skin
- Contains PCMX

Color: Orange  
Fragrance: Clean

pH Range: 7.0 - 9.0  
Dilution: RTU

order no:  
L05441

4 / 1 gal

**Almond Cream Hand Soap**

- Mild to skin, non-irritating
- Pleasant nutty fragrance

Color: Yellow  
Fragrance: Almond

pH Range: 8.0 - 9.0  
Dilution: RTU

order no:  
L05443

4 / 1 gal

**Enzyme Cleaner**

- Digests grease
- Lasting fruity fragrance

Color: White  
Fragrance: Fruity

pH Range: 6.5 - 7.0  
Dilution: Up to 32 oz / gal

order no:  
C99920  
C99921

12 / 1 qt  
4 / 1 gal

**Liquid Live Bacteria w/ Enzymes**

- Controls odors
- Keeps drains colorless

Color: White  
Fragrance: Fresh

pH Range: 6.5 - 7.0  
Dilution: RTU

order no:  
C99922  
C99923

12 / 1 qt  
4 / 1 gal

**Odor Removing Bio Culture**

- Non-pathogenic bacteria
- Consumes organic odors

Color: Purple  
Fragrance: Citrus Floral

pH Range: 7.0 - 7.5  
Dilution: RTU or Up to 64 oz / gal

order no:  
D00016

12 / 1 qt

**Banner Liquid Enzymes Bio Cultures**

- Bio-active odor neutralizer
- Destroys urine salts

Color: White  
Fragrance: Fresh

pH Range: 7.0 - 7.5  
Dilution: RTU or Up to 32 oz / gal

order no:  
D00017  
D00195

12 / 1 qt  
4 / 1 gal

**Liquid Cream Cleanser**

- Will not scratch surface
- Pleasant baby powder fragrance

Color: White  
Fragrance: Baby Powder

pH Range: 9.0 - 9.5  
Dilution: RTU

order no:  
F00109

12 / 1 qt

**Non-Acid Clear Out**

- Drain conditioner and maintainer
- Safe on plumbing and septic systems

Color: Colorless  
Fragrance: None

pH Range: 12.5 - 13.0  
Dilution: RTU

order no:  
K00124

12 / 1 qt

**Lemon Enzyme Odor Digestant**

- Natural odor digestant
- Safe on all washable surfaces

Color: Yellow  
Fragrance: Lemon

pH Range: 8.0 - 9.0  
Dilution: RTU

order no:  
K00125

4 / 1 gal

**25% Phos Porcelain Bowl & Shower Cleaner**

- Dissolves mineral deposits and soap scum
- Contains 25% phosphoric acid

Color: Pink  
Fragrance: Floral

pH Range: < 1.0  
Dilution: RTU

order no:  
L00089

12 / 1 qt







### 9% HCL Clinging Bowl Cleaner

- Thickened formula
- Quickly removes rust, lime and scale

Color: Dark Blue      pH Range: < 1.0  
 Fragrance: Mint      Dilution: RTU

order no:  
**L01207**      12 / 1 qt



### 20% HCL Disinfectant Bowl Cleaner

- Kills germs on contact
- Cuts heavy buildup of alkaline soil

Color: White      pH Range: 1.0 - 3.0  
 Fragrance: None      Dilution: RTU

order no:  
**L01211**      12 / 1 qt



### 20% Phos Thickened Bowl & Tile Cleaner

- Cleans sinks, showers, tubs, and toilets
- Pleasant cherry fragrance

Color: Pink      pH Range: < 1.0  
 Fragrance: Cherry      Dilution: RTU

order no:  
**L01213**      12 / 1 qt  
**L01214**      6 / 1qt



### Non Acid Bathroom Cleaner

- Hospital grade disinfectant
- Effective against blood-borne pathogens

Color: Blue      pH Range: 11.5 - 12.0  
 Fragrance: Floral      Dilution: RTU

order no:  
**L01216**      12 / 1 qt  
**L01218**      4 / 1 gal



### Mold & Mildew Stain Remover

- Cleans with the power of bleach
- Removes mold and mildew stains

Color: Straw      pH Range: 12.5 - 13.0  
 Fragrance: Fresh Clean      Dilution: RTU

order no:  
**L01227**      12 / 1 qt  
**L01224**      4 / 1 gal



### Acid Tile & Grout Cleaner

- Reduced scrubbing requirements
- Fast acting

Color: Milky White      pH Range: < 1.0  
 Fragrance: Mint      Dilution: RTU

order no:  
**L01232**      12 / 1 qt  
**L01233**      4 / 1 gal



### Foaming Shower Cleaner

- Deodorizes
- Cleans mineral deposits, soap scum, and oils

Color: Blue      pH Range: 1.5 - 2.0  
 Fragrance: Fresh      Dilution: RTU

order no:  
**L01252**      12 / 1 qt



### Acid Free Disinfectant Restroom Cleaner

- Disinfects washable hard, non-porous surfaces
- No mixing or rinsing required

Color: Blue      pH Range: 6.0 - 9.0  
 Fragrance: Fresh      Dilution: RTU

order no:  
**L01254**      12 / 1 qt  
**L01253**      4 / 1 gal



### Mineral Oil

- Food grade natural lubricant
- Protects metals from friction

**Color:** Colorless      **pH Range:** N/A  
**Fragrance:** None      **Dilution:** RTU

order no:  
**A01012**      6 / 1 qt  
**A01014**      4 / 1 gal



### Quarry Tile Cleaner

- Safe for most porous kitchen floors
- Improves traction-helps eliminate slips and falls

**Color:** Dark Pink      **pH Range:** < 2.0  
**Fragrance:** None      **Dilution:** RTU or 3 oz / gal

order no:  
**D01034**      4 / 1 gal



### Foaming Chlorinated Cleaner / Degreaser

- Highly alkaline, chlorinated cleaner
- For foam, steam or pressure equipment



**Color:** Yellow      **pH Range:** 13.5 - 14.0  
**Fragrance:** Characteristic      **Dilution:** 2 - 11 oz / gal

order no:  
**D01046**      4 / 1 gal  
**D01048**      5 gal  
**D01056**      55 gal



### Non Butyl Foaming Degreaser

- Alkaline degreaser concentrate
- Removes grease and grime



**Color:** Red      **pH Range:** 12.5 - 13.0  
**Fragrance:** None      **Dilution:** 2 - 6 oz / gal

order no:  
**D01050**      4 / 1 gal  
**D01052**      5 gal  
**D01068**      55 gal



### Heavy Duty Foaming Degreaser

- Tackles grease, oil, fat and tough soils
- Prolonged contact time on vertical surfaces

**Color:** Dark Brown      **pH Range:** 13.0 - 13.5  
**Fragrance:** None      **Dilution:** 2 - 12 oz / gal

order no:  
**D01055**      4 / 1 gal



### Fruit & Veggie Wash

- Special bottle measures dilution
- No rinse required

**Color:** Turquoise      **pH Range:** < 1.5  
**Fragrance:** Characteristic      **Dilution:** 1 oz / gal

order no:  
**D20358**      2 / 3 L  
**D20359**      6 / 1 qt



### Carbon Remover

- Powerful formula dissolves baked-on carbon soils
- Safe for most metal ware

**Color:** Colorless      **pH Range:** 12.5 - 13.0  
**Fragrance:** None      **Dilution:** 10 - 16 oz / gal

order no:  
**D21328**      4 / 1 gallon  
**D21329**      5 gallon



### Lemon Fresh Dish Detergent

- Long lasting suds & hard water conditioners
- Convenience packet

**Color:** Yellow      **pH Range:** 8.0 - 8.5  
**Fragrance:** Lemon      **Dilution:** 1 oz / 8 gal

order no:  
**H00023**      90 / 3.5 oz



Hospitality

### Alkaline Drain Opener

- Ideal for PVC and metal pipes
- No hazardous fumes

**Color:** Colorless      **pH Range:** 12.5 - 13.0  
**Fragrance:** None      **Dilution:** RTU (16 oz / week)

order no:  
**K00064**      12 / 1 qt



## Enzyme Digester Drain Maintainer

- Attacks all organic wastes
- Eliminates blockages in drains

**Color:** Hazy Red      **pH Range:** 7.0 - 7.5  
**Fragrance:** None      **Dilution:** 8 oz / day

order no:  
**K00074**      4 / 1 gal  
**K00075**      5 gal



## Freezer Cleaner

- Loosens all types of organic soils
- Effectively cleans grease, fats and oils

**Color:** Colorless      **pH Range:** 13.0 - 13.5  
**Fragrance:** None      **Dilution:** RTU

order no:  
**K00083**      4 / 1 gal  
**K00080**      5 gal



## RD - Oven & Grill Cleaner

- Ready-to-use clinging formula
- No noxious, choking fumes

**Color:** Green      **pH Range:** >13  
**Fragrance:** None      **Dilution:** RTU

order no:  
**K00103**      12 / 1 qt  
**K00087**      4 / 1 gal



## Foaming Oven & Grill Cleaner

- Clinging formula
- Removes grease, oil, and carbonized soil



**Color:** Brown      **pH Range:** 13.5 - 14.0  
**Fragrance:** Citrus      **Dilution:** RTU

order no:  
**K00095**      12 / 1 qt  
**K00096**      4 / 1 gal  
**K00086**      15 gal



## Hi-Temp Grill Cleaner

- Non-corrosive
- Removes carbon buildup from grill surfaces

**Color:** Amber      **pH Range:** >13.0  
**Fragrance:** None      **Dilution:** RTU

order no:  
**K00099**      6 / 1 qt



## Peroxide Block Whitener

- Perfect for food processing applications
- Removes blood, vegetable, food stains

**Color:** Colorless      **pH Range:** 3.5 - 4.0  
**Fragrance:** None      **Dilution:** RTU

order no:  
**K00100**      6 / 1 qt



## Chlorine Block Whitener

- Keeps cutting blocks ultra clean
- Lifts organic soils while bleaching stains

**Color:** Pale Yellow      **pH Range:** 13.0 - 13.5  
**Fragrance:** Chlorine      **Dilution:** RTU

order no:  
**K00101**      6 / 1 qt



## Bar Glass Wash

- Electric brush detergent in single-use packet
- Removes lipstick from glassware

**Color:** White      **pH Range:** (1%) 10.0 - 10.5  
**Fragrance:** None      **Dilution:** 1 pack / 3 gal

order no:  
**K00907**      200 / 0.5 oz



## Bar Glass Wash Kit

- Two step cleaning & sanitizing kit for glassware

**KIT INCLUDES:**

- 30 / K00907 Bar Glass Wash
- 30 / K00909 Powdered Sanitizer
- 30 / Chlorine Test Strips

order no:  
**K00908**      Kit



## Powdered Sanitizer

- EPA registered
- Provides 14% available chlorine

**Color:** White      **pH Range:** (1%) 9.0 - 9.5  
**Fragrance:** Characteristic      **Dilution:** 1 pack / 2.5 gal

order no:  
**K00911**      100 / 0.25 oz



### Clean N' Green Dish Detergent

- Multi-purpose
- Pleasant lemon scent

**Color:** Turquoise      **pH Range:** 9.5 - 10.5  
**Fragrance:** Lemon Lime      **Dilution:** 1 oz / 6 gal

order no:  
**J00241**      4 / 1 gal  
**J00242**      5 gal



### Solid Hand Dish Detergent

- Suspends greasy soils for easy rinsing
- Controlled pH

**Color:** Pink      **pH Range:** (1%) 9.5 - 10.0  
**Fragrance:** Lemon      **Dilution:** Dispensed

order no:  
**K00903**      4 / 6 lb



### Lemon Fresh Dish Detergent

- Effective in all water conditions
- Powerful grease cutting agents

**Color:** Yellow      **pH Range:** 8.0 - 8.5  
**Fragrance:** Lemon      **Dilution:** 1 oz / 8 gal

order no:  
**K01032**      4 / 1 gal  
**K01035**      5 gal



### Sparkle Green Dish Detergent

- Thick, rich long-lasting suds
- Complete spot-free cleaning



**Color:** Green      **pH Range:** 8.0 - 8.5  
**Fragrance:** Herbal Bouquet      **Dilution:** 1 oz / 3 - 5 gal

order no:  
**K01066**      4 / 1 gal  
**K01037**      5 gal  
**K01069**      15 gal



### Blue Magic Dish Detergent

- Cuts grease and heavy oils
- Rinse agents added

**Color:** Blue      **pH Range:** 6.5 - 6.8  
**Fragrance:** Herbal      **Dilution:** 1 oz / 4 gal

order no:  
**K01038**      12 / 1 qt  
**K01039**      4 / 1 gal  
**K01036**      5 gal



### Emerald Green Dish Detergent

- Free rinsing
- Gentle to hands

**Color:** Turquoise Green      **pH Range:** 8.0 - 8.5  
**Fragrance:** Lemon Lime      **Dilution:** ¼ - ½ oz / gal

order no:  
**K01045**      4 / 1 gal



### Bar Glass Wash Detergent

- Mild to skin, free rinsing, low foaming
- Breaks down problem soils

**Color:** Amber      **pH Range:** 5.5 - 6.0  
**Fragrance:** None      **Dilution:** ¼ oz / gal

order no:  
**K01044**      4 / 1 gal



### Pink Rainbow Dish Detergent

- High sudsing
- Grease cutting formula

**Color:** Pink      **pH Range:** 8.0 - 8.5  
**Fragrance:** Herbal      **Dilution:** 1 oz / 4 gal

order no:  
**K01049**      4 / 1 gal  
**K01052**      5 gal  
**C00296**      55 gal



### Dishwashing Soap Beads

- Manual, high sudsing
- Economical and easy-to-use

**Color:** White      **pH Range:** (1%) 9.5 - 10.0  
**Fragrance:** None      **Dilution:** 1 - 4 tbsp / 2 gal

order no:  
**K01053**      50 lb box



### Deep Fat Fryer Cleaner

- Aggressive grease cutting formula
- Super concentrated powder



**Color:** Blue      **pH Range:** (1%) 12.5 - 13.0  
**Fragrance:** None      **Dilution:** Up to 8 oz / gal

order no:  
**K01064**      1 / 8 lbs





## Lime Scale Remover

- Free Rinsing
- Removes hard water spots

**Color:** Green      **pH Range:** < 1.0  
**Fragrance:** Characteristic      **Dilution:** ¼ - 4 oz / gal

order no:  
**K01080**      **4 / 1 gal**



## Fresh Traction Wash

- Powerful, 2-in-1 degreaser
- Fresh enzyme fortified digester

**Color:** Green & Tan      **pH Range:** 7.0 - 7.5  
**Fragrance:** None      **Dilution:** 1 twin packet / 4 gal

order no:  
**P05215**      **30 / 2.0 oz packets**



## Solid Silversoak

- Detarnishes flatware and utensils
- Works in all water conditions

**Color:** Pink      **pH Range:** 10.5 - 11.0  
**Fragrance:** None      **Dilution:** Dispensed

order no:  
**K00900**      **4 / 6 lb**



## Liquid Presoak

- Fast acting
- Loosens dried soils

**Color:** Blue      **pH Range:** 12.0 - 12.5  
**Fragrance:** None      **Dilution:** 1 - 6 oz / gal.

order no:  
**K00906**      **4 / 1 gal**



## Low Temp 5% Dish Machine Sanitizer

- Ensures sanitary food-contact surfaces
- Aids in destaining

**Color:** Straw      **pH Range:** 12.5 - 13.0  
**Fragrance:** Chlorine      **Dilution:** 3 - 17 oz / 10 gal

order no:  
**K01046**      **4 / 1 gal**  
**K01047**      **5 gal**



## Heavy Duty Delimer

- Removes lime, scale and mineral deposits
- Keeps tubing jets and hoses free of buildup

**Color:** Green      **pH Range:** < 1.0  
**Fragrance:** Characteristic      **Dilution:** Up to 4 oz / gal

order no:  
**K01067**      **4 / 1 gal**  
**K01079**      **15 gal**



### Metal Safe Liquid Machine Dish Detergent

- Highly concentrated cleaner
- Excellent water conditioning



**Color:** Colorless      **pH Range:** 13.5 - 14.0  
**Fragrance:** Characteristic      **Dilution:** 1.3 oz / 10 gal

order no:  
**K01106**      4 / 1 gal  
**K01084**      5 gal  
**K01068**      15 gal

### Encapsulated Machine Dish Detergent

- Chlorinated detergent for automatic dishmachines
- Removes all types of food soils



**Color:** White      **pH Range:** (1%) 12.0 - 12.5  
**Fragrance:** Characteristic      **Dilution:** Dispensed

order no:  
**K01078**      4 / 8 lb

### Low Temp Machine Dish Detergent

- Formulated for low temperatures
- Effective destaining and protein soil removal



**Color:** Red      **pH Range:** 13.5 - 14.0  
**Fragrance:** None      **Dilution:** ¼ - ½ oz / 10 gal

order no:  
**K01082**      4 / 1 gal  
**K01081**      5 gal

### Encapsulated Metal Safe Machine Dish Detergent

- Effective in all water conditions
- Excellent stain removal properties



**Color:** White      **pH Range:** (1%) 12.5 - 13.0  
**Fragrance:** Characteristic      **Dilution:** Dispensed

order no:  
**K01083**      4 / 8 lb

### Low Temp 10% Dish Machine Sanitizer

- Eliminates need for high-temperature sanitizing
- Aids in removing tough residues



**Color:** Straw      **pH Range:** 12.5 - 13.0  
**Fragrance:** Chlorine      **Dilution:** 3 - 12 oz / 10 gal

order no:  
**K01085**      4 / 1 gal  
**K01087**      5 gal

### High Temp HTR Rinse Aid

- For high/low temperature dishmachines
- Dissolves scale and lime deposits



**Color:** Blue      **pH Range:** 6.5 - 8.0  
**Fragrance:** None      **Dilution:** ½ oz / 10 gal

order no:  
**K01097**      4 / 1 gal  
**K01098**      5 gal

### Low Temp Rinse Aid

- Improved efficiency in hard water
- Effective in all water conditions



**Color:** Blue      **pH Range:** 6.5 - 8.0  
**Fragrance:** None      **Dilution:** ½ oz / 10 gal

order no:  
**K01091**      4 / 1 gal  
**K01092**      5 gal

### Powdered Presoak & Destainer

- Detarnishes silverware
- Buffered alkaline system



**Color:** Light Blue      **pH Range:** (1%) 11.5 - 12.0  
**Fragrance:** None      **Dilution:** Dispensed

order no:  
**K01104**      1 / 8 lb  
**K01094**      4 / 8 lb

### Plastic & China Destainer

- Fortified with oxygen bleach
- Removes stubborn organic stains



**Color:** Blue      **pH Range:** 10.5 - 11.0  
**Fragrance:** Fresh      **Dilution:** Dispensed

order no:  
**K01096**      1 / 8 lb

### Multi-Temp Machine Dish Detergent

- Highly concentrated
- Breaks up soils



**Color:** Red      **pH Range:** 13.5 - 14.0  
**Fragrance:** None      **Dilution:** ¼ - ½ oz gal

order no:  
**K01182**      4 / 1 gal  
**K01181**      5 gal

# Brewery Cleaning Program

Whether you're a Bavarian beer law purist or you love your additives, the last thing you want in your beer is wild yeast or bacteria that can create off-flavors or spoilage. Properly washing and sanitizing your tanks is key to the success of your brewery.

Just like you take pride in your beer, we take pride in producing the finest cleaning products to make sure your equipment stays clean and sanitary after every batch. Protect your brewery's hard-earned reputation by cleaning with Victoria Bay's Brewery Cleaning Program.

## Causti-Clean

- Aggressively attacks baked-on organic compounds
- Free rinsing, low foaming

**Color:** Dark Brown      **pH Range:** >12.5  
**Fragrance:** Characteristic      **Dilution:** ½ - 10 oz / gal

order no:  
**D02032**      5 gal  
**D02033**      55 gal



## ACID CIP

- Nitric & phosphoric acid + low foaming surfactant
- For use in cleaning, descaling & passivation

**Color:** Pink      **pH Range:** < 2  
**Fragrance:** Acidic      **Dilution:** 1 - 5 oz / gal

order no:  
**D02034**      5 gal  
**D02035**      55 gal



## Klor-Foam NP

- Self-foaming, free rinsing, phosphate-free
- Chlorinated alkaline cleaner

**Color:** Yellow      **pH Range:** >12  
**Fragrance:** Characteristic      **Dilution:** 2 - 8 oz / gal

order no:  
**D02036**      5 gal



## San-I-Ox

- EPA registered peroxyacetic acid (PAA) based sanitizer
- Highly effective on bacteria, yeasts, and mold

**Color:** Colorless      **pH Range:** < 1.5  
**Fragrance:** Acrid      **Dilution:** 1.0 - 6.1 oz. / gal. (77 - 469 ppm)

order no:  
**R05021**      4.5 gal

# Spot & Stain Fighters

## Oxisafe All Fabric Laundry Bleach

- Use on colored and synthetic fabrics
- Leaves no harmful residue

**Color:** Colorless      **pH Range:** 5.0 - 5.5  
**Fragrance:** None      **Dilution:** 1½ - 3 oz / 50 lb fabric

order no:  
**G00105**      5 gal  
**G00106**      15 gal  
**G00201**      55 gal



## Simply Brite Laundry Destainer

- Helps remove proteins and starches
- Ensures optimum bleaching

**Color:** Straw      **pH Range:** 12.0 - 12.5  
**Fragrance:** Chlorine      **Dilution:** 1 - 1½ oz / 50 lb fabric

order no:  
**G00110**      5 gal  
**G00111**      15 gal  
**G00119**      55 gal



## Dry Chlorine Laundry Bleach

- Excellent stain removal properties
- Oxidizes organic residues

**Color:** White      **pH Range:** (1%) 7.0 - 7.5  
**Fragrance:** Characteristic      **Dilution:** ¾ - 3.0 oz / 50 lb fabric

order no:  
**G00113**      50 lb box



## Laundry Spotter

- Effective against a wide range of soils
- Does not form rings

**Color:** Light Blue      **pH Range:** 10.0 - 10.5  
**Fragrance:** None      **Dilution:** RTU

order no:  
**G00130**      12 / 1 qt



# Detergents

## Lemon Powder Laundry Detergent

- Phosphate-free
- Controlled sudsing

**Color:** White      **pH Range:** 10.0 - 11.0  
**Fragrance:** Characteristic      **Dilution:** ¼ - 3.0 oz / 50 lb fabric

order no:  
**G00040**      **100 lb box**



## Powder Laundry Detergent

- Contains anti-soil redposition agents
- Effective in all water conditions

**Color:** White      **pH Range:** (1%) 10.8 - 11.25  
**Fragrance:** Lemon      **Dilution:** 4 - 8 oz / 50 lbs fabric

order no:  
**G00043**      **25 lb box**  
**G00046**      **50 lb box**



## Encapsulated Laundry Detergent w/ Enzymes

- Minimizes dingy appearance of linens
- Works in hard water

**Color:** White      **pH Range:** 10.0 - 11.0  
**Fragrance:** Fresh      **Dilution:** Dispensed

order no:  
**G00083**      **4 / 6 lb**



## Solid Laundry Detergent

- Premium solid laundry detergent
- Recommended in heavy duty applications

**Color:** Blue      **pH Range:** (1%) 11.5 - 12.0  
**Fragrance:** Fresh      **Dilution:** Dispensed

order no:  
**G00084**      **4 / 6 lb**



## RD - Liquid Laundry Detergent

- Aggressive surfactant system
- Prevents soils from redepositing

**Color:** Blue      **pH Range:** 8.0 - 8.5  
**Fragrance:** Fresh & Clean      **Dilution:** 1 oz / 10lb fabric

order no:  
**G00096**      **4 / 1 gal**  
**G00117**      **5 gal**



## IG1000 Liquid Laundry Detergent

- Leaves no alkaline residue
- Quickly lifts and suspends soils

**Color:** Blue      **pH Range:** 8.0 - 8.5  
**Fragrance:** Fresh      **Dilution:** ¼ - ½ cup / load

order no:  
**G00098**      **4 / 1 gal**  
**G00101**      **5 gal**  
**G00102**      **15 gal**  
**G00099**      **55 gal**



## Phosphate Free Laundry Detergent

- Fortified with synthetic detergents
- Use in a variety of water conditions

**Color:** Blue      **pH Range:** 9.0 - 9.5  
**Fragrance:** Fresh      **Dilution:** 4 oz / 50 lbs fabric

order no:  
**G00103**      **5 gal**  
**G00104**      **15 gal**



## LG3000 Built Liquid Laundry Detergent

- Eliminates need for break or builder
- Cleans in cold and hot water

**Color:** Amber      **pH Range:** 13.5 - 14.0  
**Fragrance:** Lemon Lime      **Dilution:** 3 - 7oz / 50 lb fabric

order no:  
**G00107**      **5 gal**  
**G00108**      **15 gal**  
**G00112**



## Surge Bio Active II Laundry Detergent

- Effectively lifts and suspends soils
- Whitens and brightens fabrics

**Color:** Blue      **pH Range:** 8.25 - 8.50  
**Fragrance:** Lavender      **Dilution:** 1 - 3 oz / 50 lb fabric

order no:  
**G00174**      **5 gal**  
**G00175**      **15 gal**



## Universal Reclaim Detergent

- Chlorinated detergent for laundry & kitchen
- Excellent stain removal properties

**Color:** White      **pH Range:** (1%) 13.0 - 13.5  
**Fragrance:** Characteristic      **Dilution:** 2 - 4 lb / 100 lb fabric

order no:  
**K01062**      **50 lb pail**  
**K01060**      **12 / 2 lb jars**





# Conditioners

## Liquid Starch

- Highly concentrated for economical use
- Protects fabrics from stains

**Color:** Milky White      **pH Range:** 8.0 - 8.5  
**Fragrance:** Bland      **Dilution:** 1 - 2 oz / gal

order no:  
**G00100**      **5 gal**



## Rust Removing Laundry Sour

- Neutralizes alkaline residues
- Dissolves and suspends iron stains

**Color:** Colorless      **pH Range:** 1.0 - 1.5  
**Fragrance:** None      **Dilution:** ½ - 1 oz / 50 lb fabric

order no:  
**G00115**      **5 gal**  
**G00116**      **15 gal**



## Fresh Breeze Laundry Softener

- Gives fabric a soft, smooth feel
- Imparts a fresh, clean scent

**Color:** Blue      **pH Range:** 4.5 - 5.0  
**Fragrance:** Floral      **Dilution:** ½ - 1 oz / 50 lb fabric

order no:  
**G00118**      **4 / 1 gal**  
**G00120**      **5 gal**  
**G00121**      **15 gal**



## Soft Touch Sour & Softener

- Softener and neutralizer
- Speeds extraction and drying

**Color:** Blue      **pH Range:** 1.5 - 2.0  
**Fragrance:** Floral      **Dilution:** ½ - 1 oz / 50 lb fabric

order no:  
**G00122**      **5 gal**  
**G00149**      **15 gal**



## Liquid Laundry Builder

- Highly alkaline break/builder
- Removes grease, oil, and protein

**Color:** Colorless      **pH Range:** 13.5 - 14.0  
**Fragrance:** Bland      **Dilution:** 2 - 4 oz / 50 lb fabric

order no:  
**G00126**      **5 gal**  
**G00127**      **15 gal**  
**G00128**      **55 gal**



## Tranquility Laundry Softener

- One step softening and deodorizing
- Reduces static cling

**Color:** Blue      **pH Range:** 4.5 - 5.0  
**Fragrance:** Fresh      **Dilution:** 1 - 2 oz / 50 lb fabric

order no:  
**G00145**      **4/1 gal**  
**G00146**      **5 gal**  
**G00147**      **15 gal**



## Super Liquid Laundry Builder II

- Buffered alkalis
- Non-foaming

**Color:** Colorless      **pH Range:** 13.5 - 14.0  
**Fragrance:** None      **Dilution:** 2 - 4 oz / 50 lb fabric

order no:  
**G00170**      **5 gal**  
**G00171**      **15 gal**



# ENVIRONMENTAL SERVICE PROGRAM

featuring

## Victoria Bay

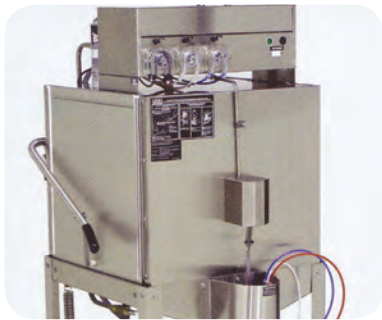
Quality products for everyday needs.

### Equipment and Chemicals

The exclusive **Victoria Bay Environmental Service Program** is a comprehensive system that can be customized to meet your needs. We offer a full line of dish and laundry equipment, housekeeping dispensers and accessories, as well as, a full line of chemicals. Our service technicians are available 24/7 to make sure your operation is not interrupted.



## Warewashing: High Temperature / Low Temperature



- **K00900** Solid Silversoak
- **K00906** Liquid Presoak
- **K01047** Low Temp 5% Dish Machine Sanitizer
- **K01067** Heavy Duty Delimer
- **K01078** Encapsulated Detergent

- **K01081** Low Temp Dish Machine Detergent
- **K01083** Encapsulated Metal Safe Machine Dish Detergent
- **K01084** Metal Safe Liquid Dish Machine Detergent
- **K01085** Low Temp 10% Sanitizer

- **K01092** Low Temp Rinse
- **K01094** Powdered Presoak & Destainer
- **K01098** High Temp Rinse Aid
- **K01181** Multi-Temp Dish Machine Detergent

## Laundry



- **G00083** Encapsulated Laundry Detergent with Enzymes
- **G00096** RD - Liquid Laundry Detergent
- **G00101** IG1000 Liquid Laundry Detergent
- **G00103** Phosphate Free Laundry Detergent
- **G00105** OxiSafe All Fabric Laundry Bleach
- **G00107** LG3000 Built Liquid Laundry Detergent
- **G00110** Simply Brite Laundry Destainer
- **G00113** Dry Chlorine Laundry Bleach

- **G00115** Rust Removing Laundry Sour
- **G00120** Fresh Breeze Laundry Softener
- **G00122** Soft Touch Sour and Softener
- **G00126** Liquid Laundry Builder
- **G00146** Tranquility Laundry Softener
- **G00170** Super Liquid Laundry Builder II
- **G00174** Surge Bio Active II Laundry Detergent
- **K01062** Universal Reclaim Detergent

## Food Prep Sanitation



- **C00181** Food Service Sanitizer
- **D01015** Citrus Cleaner & Degreaser
- **D01021** Premium HD Degreaser
- **D01034** Quarry Tile Cleaner
- **D01052** Non Butyl Foaming Degreaser
- **D01055** Heavy Duty Foaming Degreaser
- **K00064** Alkaline Drain Opener
- **K00074** Enzyme Digester Drain Maintainer
- **K00095** Foaming Oven & Grill Cleaner
- **K01064** Deep Fat Fryer Cleaner
- **K01096** Plastic & China Destainer

## Kitchen: 3-Compartment Sink



- **C00181** Food Service Sanitizer
- **K00900** Solid Silversoak
- **K00903** Solid Hand Dish Detergent
- **K01035** Lemon Fresh Dish Detergent
- **K01036** Blue Magic Dish Detergent
- **K01037** Sparkle Green Dish Detergent
- **K01094** Powdered Presoak & Destainer

## General: Housekeeping



- **D02031** Peroxide Disinfectant Cleaner
- **G00434** Neutral Damp Mop
- **G00450** CMS All Purpose Cleaner
- **G00451** CMS Non-Solvent Cleaner/ Degreaser
- **G00452** CMS Concentrated V.O.C. Free Glass Cleaner
- **G00453** CMS OxyOrange Cleaner
- **G00454** CMS Bathroom & Bowl Cleaner
- **S00001** Lemon Scented Disinfectant
- **S00002** Non Acid Disinfectant Bathroom Cleaner
- **S00003** Fresh Scent Disinfectant Cleaner
- **S00004** Food Service Sanitizer
- **S00010** Heavy Duty Degreaser
- **S00011** Capri Ultra
- **S00012** OxyOrange O<sub>2</sub>O
- **S00013** Fresh Traction Wash Concentrate
- **S00016** Neutral Lemon Floor Cleaner
- **S00020** All Purpose Cleaner
- **S00021** Glass & Multi-Surface Cleaner



### #1 Lemon Scented Disinfectant

- Cleans and disinfects in one step
- Broad spectrum disinfectant

**Color:** Yellow      **pH Range:** 11.0 - 11.5  
**Fragrance:** Lemon      **Dilution:** 2 oz / gal

order no:  
**S00001**      **2 / 1 gal**



### #2 Ultra Capri

- Quickly and effectively destroys malodors
- Fresh, clean fragrance

**Color:** Light Yellow      **pH Range:** 6.5 - 7.0  
**Fragrance:** Orange      **Dilution:** 4 oz / gal

order no:  
**S00011**      **2 / 1 gal**



### #3 Non-Acid Disinfectant Bathroom Cleaner

- One step disinfecting and cleaning
- Tackles tough, greasy soils

**Color:** Purple      **pH Range:** 11.5 - 12.0  
**Fragrance:** Floral      **Dilution:** 2 - 4 oz / gal

order no:  
**S00002**      **2 / 1 gal**



### #5 Fresh Scent Disinfectant Cleaner

- Neutral disinfectant cleaner
- Use on all water-safe surfaces

**Color:** Blue      **pH Range:** 7.5 - 8.0  
**Fragrance:** Floral      **Dilution:** 2 oz / gal

order no:  
**S00003**      **2 / 1 gal**



### #6 Food Service Sanitizer

- Super-concentrated sanitizer
- Safe on food contact surfaces

**Color:** Blue      **pH Range:** 6.5 - 7.0  
**Fragrance:** None      **Dilution:** ¼ oz / gal

order no:  
**S00004**      **2 / 1 gal**



### #9 Neutral Lemon Floor Cleaner

- Effectively cleans floors and vertical surfaces
- No dulling

**Color:** Yellow      **pH Range:** 7.5 - 8.0  
**Fragrance:** Lemon      **Dilution:** 1 oz / gal

order no:  
**S00016**      **2 / 1 gal**



### #10 Heavy Duty Degreaser

- Super concentrated
- Emulsifies oil with ease

**Color:** Dark Green      **pH Range:** 12.5 - 13.0  
**Fragrance:** Sassafras      **Dilution:** 2 - 4 oz / gal

order no:  
**S00010**      **2 / 1 gal**



### #11 All Purpose Cleaner

- Excellent all purpose cleaner and deodorizer
- Wide range of dilutions

**Color:** Pink      **pH Range:** 11.5 - 12.0  
**Fragrance:** Citrus      **Dilution:** 1 - 4 oz / gal

order no:  
**S00020**      **2 / 1 gal**



### #12 Glass & Multi-Surface

- Non-streaking formula
- Cleans many surfaces

**Color:** Blue      **pH Range:** 11.0 - 11.5  
**Fragrance:** None      **Dilution:** 4 - 5 oz / gal

order no:  
**S00021**      **2 / 1 gal**



### #18 CMS All Purpose Cleaner

- Quickly loosens light soils
- Leaves no dulling film

UL 2759

**Color:** Pink      **pH Range:** 10.5 - 11.0  
**Fragrance:** None      **Dilution:** 1 - 4 oz / gal

order no:  
**G00450**      **2 / 1 gal**



### #19 CMS Non-Solvent Cleaner/Degreaser

- Mild pH
- Removes grease, ink, and blood

UL 2759

**Color:** Green      **pH Range:** 10.5 - 11.0  
**Fragrance:** None      **Dilution:** 2 - 4 oz / gal

order no:  
**G00451**      **2 / 1 gal**



### #20 CMS Concentrated V.O.C. Free Glass Cleaner

- Loosens soils on contact
- Ideal for glass, metal, and plastic

UL 2759

**Color:** Dark Blue      **pH Range:** 7.5 - 8.0  
**Fragrance:** None      **Dilution:** 4 oz / gal

order no:  
**G00452**      **2 / 1 gal**



### #21 CMS Bathroom and Bowl Cleaner

- Non-butyl, super concentrated **UL 2759**
- Ideal for removing rust deposits

**Color:** Yellow      **pH Range:** 0.5 - 1.0  
**Fragrance:** None      **Dilution:** 8 oz / gal

order no:  
**G00454**      2 / 1 gal



### #29 OxyOrange O2O

- 2-in-1 cleaner degreaser
- Cleans, whitens and deodorizes

**Color:** Colorless      **pH Range:** 5.5 - 6.0  
**Fragrance:** Orange      **Dilution:** ½ - 8 oz / gal

order no:  
**S00012**      2 / 1 gal



### #30 CMS Fresh Traction Wash Concentrate

- Breaks down grease and organic soils
- Brightens grout lines

**Color:** Green      **pH Range:** 5.5 - 6.0  
**Fragrance:** None      **Dilution:** 1 - 4 oz / gal

order no:  
**S00013**      2 / 1 gal



### #32 CMS OxyOrange Cleaner

- Cleans, whitens and brightens **UL 2759**
- Ideal for floors and carpets

**Color:** Colorless      **pH Range:** 5.5 - 6.0  
**Fragrance:** Orange      **Dilution:** ½ - 8 oz / gal

order no:  
**G00453**      2 / 1 gal



### #33 Neutral Damp Mop

- Maintains a high gloss
- Leaves no dulling film

**Color:** Red      **pH Range:** 7.5 - 8.0  
**Fragrance:** Tangy Fruit      **Dilution:** ½ oz / gal

order no:  
**G00434**      2 / 1 gal



### #37 Peroxide Disinfectant Cleaner

- Evaporates completely
- Cleans grout

**Color:** Colorless      **pH Range:** < 1.0  
**Fragrance:** None      **Dilution:** 1 - 2 oz / gal

order no:  
**D02031**      2 / 1 gal





# EDS

## Easy Dilution System

Floors ■ Hard Surfaces ■ Glass  
Bathrooms ■ Kitchens ■ Disinfectants

Simply attach water hose to the nozzle, select bucket or bottle fill, and squeeze the handle. It's that simple! The dispenser spout hooks right over the edge of a sink or a bucket, the flow-lock button allows for hands-free operation.

High-Low Flow Selector Button  
for bottle or bucket fill

Flow Lock Button for hands-free operation

Quick Connect Nozzle connects  
to any standard hose

Dispenser Spout  
hooks over bucket or sink,  
or inserts into bottle neck

Sealed, spill-free bottle



**Peroxide  
Disinfectant Cleaner**

**Victoria Bay**  
Quality products for every job.

**ACTIVE INGREDIENTS:**

Hydrogen Peroxide	4.25%
OTHER INGREDIENTS	95.75%
<b>TOTAL</b>	<b>100.00%</b>

**KEEP OUT OF REACH OF CHILDREN**

**CAUTION**

See additional precautionary statements on side.

**FIRST AID**

**IF IN EYES:** Hold eye open and flush with water for 15-20 minutes. Remove contact lenses, if present, after the first 5 minutes. Then continue flushing eye. **IF ON SKIN OR CLOTHING:** Wash off contaminated clothing. Wash skin thoroughly with plenty of water for 15-20 minutes. **IF SWALLOWED:** Rinse your mouth with a glass of water. If able to swallow, drink water and bring water to the doctor. Do not induce vomiting unless told to do so by a poison control center or doctor. Do not get anything into your eyes or on your clothing.

**IF ON CLOTHING:** Wash contaminated clothing thoroughly before reuse.

**IF ON SURFACES:** Wipe up immediately with plenty of water.

**IF SWALLOWED:** Call a doctor or poison control center for treatment.

**Note to Physician:** Potable medical drainage may contaminate public sewage.

EPH REG. NO. 43745-11-04144, EPA EST. NO. 43745-770-2

**NET CONTENTS: 0.79 Gal (3 Liters)**

**REORDER # D20551**

## Peroxide Disinfectant Cleaner

- Evaporates completely
- Cleans grout

**Color:** Colorless  
**Fragrance:** None

**pH Range:** < 1.0  
**Dilution:** 1 - 2 oz / gal

order no:  
**D20351**

2 / 3 L



## Hi-Q Disinfectant

- Multi-surface cleaner
- Cuts through tough grease and grime

**Color:** Blue  
**Fragrance:** Floral

**pH Range:** 6.0 - 6.5  
**Dilution:** ½ oz / gal

order no:  
**D20352**

2 / 3 L



## Neutral Damp Mop

- Maintains a high gloss
- Leaves no dulling film

**Color:** Red  
**Fragrance:** Tangy Fruit

**pH Range:** 7.5 - 8.0  
**Dilution:** ½ oz / gal

order no:  
**D20356**

2 / 3 L



## Lavender All-Purpose Cleaner

- Cleaner and deodorizer in one
- For all hard surfaces

**Color:** Purple  
**Fragrance:** Lavender

**pH Range:** 7.5 - 8.0  
**Dilution:** 1 oz / gal

order no:  
**D20353**

2 / 3 L



## Non Acid Bathroom Disinfectant

- Cuts through tough grease and grime
- Inhibits bacterial growth on moist surfaces

**Color:** Blue  
**Fragrance:** Fresh

**pH Range:** 11.5 - 12.0  
**Dilution:** 1 oz / gal

order no:  
**D20350**

2 / 3 L



## Glass Cleaner

- Contains no ammonia
- Non-streaking cleaner

**Color:** Dark Blue  
**Fragrance:** None

**pH Range:** 7.5 - 8.0  
**Dilution:** 1 oz / gal

order no:  
**D20355**

2 / 3 L



## Heavy Duty Degreaser

- Mild pH
- Contains No Chlorinated or Petroleum Solvents

**Color:** Green  
**Fragrance:** None

**pH Range:** 11.0 - 11.5  
**Dilution:** 1 oz / gal

order no:  
**D20354**

2 / 3 L



# Victoria Bay

Environmentally Responsible Products for your Everyday Needs



Victoria Bay's Greensafe chemicals have been developed to reflect our commitment to protecting the environment. Our products have been manufactured with the latest technology and research to help reduce waste and lower VOCs while maintaining chemical effectiveness. By identifying our products as environmentally responsible we help our consumers make educated purchasing decisions.

Victoria Bay's commitment to reducing waste starts in the chemical manufacturing process. We have evaluated our production methods and implemented strategies to shrink our ecological impact. Whether indoors or outdoors, all VOCs have a potential impact on air quality. With our environmentally responsible products, we keep VOCs as low as possible while still providing good performance. The health of our consumers is very important to us. Victoria Bay's Greensafe chemicals are an excellent addition to your green cleaning program.

Look for the following certifications on our Greensafe products. EcoLogo™ certified products are marked with a green **UL** and the associated certification number, while Safer Choice certified products carry a blue **SC** indicator.



UL ECOLOGO® Certification delivers comprehensive value to help companies and manufacturers gain a competitive edge and win in the marketplace by communicating that their product, service or package has reduced environmental impact.



EPA/Safer Choice recognition does not constitute endorsement of this product. The Safer Choice label signifies that the product's formula, as represented it to the EPA by the manufacturer, contains ingredients with more positive human health and environmental characteristics than conventional products of the same type. EPA/Safer Choice relies solely on the manufacturer, its integrity and good faith, for information on the product's composition, ingredients and attributes. EPA/Safer Choice has not independently identified, that is, via chemical analysis, the ingredients in the product formula, nor evaluated any of the manufacturer's non-ingredient claims. EPA/Safer Choice provides its evaluation only as to the product's human health and environmental characteristics, as specified in the Safer Choice Standard and based on currently available information and scientific understanding. *Formerly DfE (Design for Environment)*

### Glass Cleaner RTU

- Streak free cleaning with minimal effort **UL 2759**
- Contains no ammonia

**Color:** Light Blue  
**Fragrance:** None  
**pH Range:** 9.5 - 10.0  
**Dilution:** RTU

order no:  
**G00471** **12/1 qt**



All Purpose

### OxyOrange Concentrated Cleaner

- Cleans, whitens and brightens **UL 2759**
- Ideal for floors and carpets

**Color:** Colorless  
**Fragrance:** Orange  
**pH Range:** 5.5 - 6.0  
**Dilution:** ½ - 10 oz / gal

order no:  
**G00472** **4/1 gal**



All Purpose

### Banner Natural

- Bio-enzymatic odor digester **UL 2796**
- Ideal for maintaining drains & pipes

**Color:** Colorless  
**Fragrance:** Fresh  
**pH Range:** 6.5 - 7.0  
**Dilution:** RTU

order no:  
**G00473** **12/1 qt**



All Purpose

### Foaming Shower & Bathroom

- Removes soap scum, rust stains **UL 2759**
- For acid resistant bath surfaces

**Color:** Yellow  
**Fragrance:** Pleasant  
**pH Range:** 1.0 - 1.5  
**Dilution:** RTU

order no:  
**G00510** **12/1 qt**



Restroom

### Carpet Extractor

- For use in hot water extraction cleaners **SC**
- Contains no solvents or phosphates

**Color:** Light Yellow  
**Fragrance:** None  
**pH Range:** 8.0 - 8.5  
**Dilution:** 2 - 8 oz / gal

order no:  
**G00415** **4/1 gal**



Carpet Care

### Carpet Oxygen Spotter

- Oxygen fortified **SC**
- Highly effective on organic stains

**Color:** Colorless  
**Fragrance:** None  
**pH Range:** 8.0 - 8.5  
**Dilution:** RTU

order no:  
**G00416** **12/1 qt**



Carpet Care

### Green Liquid Laundry Detergent

- Lifts and suspends soils **UL 2759**
- Leaves no alkaline residue

**Color:** Colorless  
**Fragrance:** Fresh  
**pH Range:** 8.5 - 9.0  
**Dilution:** ¼ - ½ cup / load

order no:  
**G00491** **2.5 gal**  
**G00490** **5 gal**



Laundry

### Powdered Eco Laundry Detergent

- Contains no phosphates **UL 2759**
- High efficiency

**Color:** White  
**Fragrance:** None  
**pH Range:** 10.0 - 10.5  
**Dilution:** ¼ cup / load

order no:  
**G00493** **50 lb box**



Laundry

### Ecodetergent

- Premeasured one packet per load **UL 2759**
- Leaves clothes clean and fresh

**Color:** White  
**Fragrance:** None  
**pH Range:** 10.0 - 10.5  
**Dilution:** 1 packet / load

order no:  
**G00530** **156/2 oz**



Convenience

### Enviro Sink Clean

- Contains foam stabilizers **SC**
- Long-lasting suds

**Color:** Yellow  
**Fragrance:** Fruity  
**pH Range:** 6.5 - 7.0  
**Dilution:** 1 oz / 1 gal

order no:  
**G00532** **90/3.5 oz**



Convenience

## Eco Rinse Additive

- Low foam rinse aid surfactant
- Spot free drying

UL 2759

**Color:** Colorless  
**Fragrance:** None  
**pH Range:** 8.0 - 8.5  
**Dilution:** ¼ - 1 oz / 10 gal

order no:  
**G00520** 4/1 gal  
**G00519** 5 gal



Kitchen

## Eco Dish Detergent

- Long-lasting suds
- Complete spot-free cleaning

SC

**Color:** Yellow  
**Fragrance:** Fruity  
**pH Range:** 6.5 - 7.0  
**Dilution:** 1 oz / 4 gal

order no:  
**G00517** 4/1 gal  
**G00516** 5 gal



Kitchen

## High Temp Encapsulated Dishmachine Detergent

- Easily dispensed through "bowl" dispenser
- Effective in all water conditions

UL 2759

**Color:** White  
**Fragrance:** Characteristic  
**pH Range:** (1%) 9.5 - 10.0  
**Dilution:** Dispensed

order no:  
**G00518** 4/8 lb



Kitchen

## Stainless Steel Cleaner

- Cleans, polishes and protects stainless steel
- Environmentally responsible; no petroleum distillates

SC

**Color:** Colorless  
**Fragrance:** Light Orange  
**pH Range:** N/A  
**Dilution:** RTU

order no:  
**K01028** 6 / 16 oz



Kitchen

## #18 CMS All Purpose Cleaner

- Quickly loosens light soils
- Leaves no dulling film

UL 2759

**Color:** Dark Pink  
**Fragrance:** None  
**pH Range:** 10.5 - 11.0  
**Dilution:** 1 - 4 oz / gal

order no:  
**G00450** 2/1 gal



CMS

## #19 CMS Non-Solvent Cleaner/Degreaser

- Mild pH
- Removes grease, ink, and blood

UL 2759

**Color:** Green  
**Fragrance:** None  
**pH Range:** 10.5 - 11.0  
**Dilution:** 2 - 4 oz / gal

order no:  
**G00451** 2/1 gal



CMS

## #20 CMS Concentrated V.O.C. Free Glass Cleaner

- Loosens soils on contact
- Ideal for glass, metal, and plastic

UL 2759

**Color:** Blue  
**Fragrance:** None  
**pH Range:** 7.5 - 8.0  
**Dilution:** 4 oz / gal

order no:  
**G00452** 2/1 gal



CMS

## #21 CMS Bathroom and Bowl Cleaner

- Non-butyl, super concentrated
- Ideal for removing rust deposits

UL 2759

**Color:** Yellow  
**Fragrance:** None  
**pH Range:** 0.5 - 1.0  
**Dilution:** 8 oz / gal

order no:  
**G00454** 2/1 gal



CMS

## #32 CMS OxyOrange Cleaner

- Cleans, whitens and deodorizes
- Ideal for floors and carpets

UL 2759

**Color:** Colorless  
**Fragrance:** Orange  
**pH Range:** 5.5 - 6.0  
**Dilution:** ½ - 8 oz / gal

order no:  
**G00453** 2/1 gal



CMS

## #33 Neutral Damp Mop

- Maintains a high gloss
- Leaves no dulling finish

**Color:** Red  
**Fragrance:** Tangy Fruit  
**pH Range:** 7.5 - 8.0  
**Dilution:** ½ oz / gal

order no:  
**G00434** 2 / 1 gal



CMS



### Carpet Spot Remover & Deodorizer

- Removes iodine and betadine instantly
- Works on tough food and beverage stains

**Color:** Blue      **pH Range:** 9.4 - 9.9  
**Fragrance:** None      **Dilution:** RTU

order no:  
**D00007**      **12 / 1 qt**



### Foaming Carpet Shampoo

- Deep cleans carpet
- Removes the toughest of soils easily

**Color:** Colorless      **pH Range:** 9.4 - 9.9  
**Fragrance:** Clean      **Dilution:** 4 oz / gal

order no:  
**D00012**      **4 / 1 gal**



### Carpet Bonnet Cleaner

- Enzymatically charged
- Fast drying formula

**Color:** Colorless      **pH Range:** 6.0 - 6.5  
**Fragrance:** Citrus      **Dilution:** Up to 11 oz / gal

order no:  
**D00015**      **4 / 1 gal**



### Carpet Traffic Lane Cleaner

- Loosens particulate soils for easy removal
- Enzyme fortified for odor control

**Color:** Straw      **pH Range:** 8.5 - 9.0  
**Fragrance:** None      **Dilution:** 11 - 13 oz / gal

order no:  
**D00022**      **4 / 1 gal**



### Carpet Extraction Cleaner

- Highly concentrated - economical
- Residue free - fresh smelling results

**Color:** Straw      **pH Range:** 10.5 - 11.0  
**Fragrance:** Clean      **Dilution:** ½ oz / gal

order no:  
**D00013**      **4 / 1 gal**



### Carpet Condition Rinse

- Effective on coffee and tea stains
- Use for general debrowning

**Color:** Yellow-brown      **pH Range:** 1.5 - 2.0  
**Fragrance:** None      **Dilution:** 1 oz / gal

order no:  
**C99994**      **4 / 1 gal**



### Defoamer

- Reduces emptying of recovery tanks
- Helps protect motors and equipment

**Color:** White      **pH Range:** 8.0 - 8.5  
**Fragrance:** None      **Dilution:** ½ oz / gal

order no:  
**D00014**      **4 / 1 gal**



### Carpet Enzyme Spot Remover

- Excellent for removing pet stains and odors
- Bio-active enzymatic cleaner

**Color:** Milky White      **pH Range:** 6.5 - 7.0  
**Fragrance:** Floral      **Dilution:** RTU

order no:  
**D00020**      **12 / 1 qt**  
**D00257**      **4 / 1 gal**





**Victoria Bay offers a comprehensive line of quality cleaning chemicals.**

**Air Care**

**Disinfectants**

**HD Degreasers**

**All Purpose**

**EDS**

**Kitchen**

**Auto Care**

**ESP**

**Laundry**

**Brewery**

**Floor Care**

**Restroom**

**Carpet Care**

**Green Safe**

**Warewash**

**CMS**

**Hand Cleaners**

**Sales Consultant:** \_\_\_\_\_

**Telephone #:** \_\_\_\_\_

**Email Address:** \_\_\_\_\_