



NaturTec[®]

Sustainable Biobased Materials

Introduction and Sales Overview



Natur-Tec® Bioplastics Solutions



Northern Technologies International Corp.

- Headquartered in Circle Pines, MN USA
- Global distribution through 20 Joint-Ventures
- Global R&D & Manufacturing Facilities
- NASDAQ Ticker: NTIC



Natur-Tec® Biopolymer Compounds

- Certified Compostable
- Biobased – Made from plants
- Engineered for high performance



Natur-Bag® Zero Waste Solutions

- Liners/ Shopper bags
- Gloves



Circule® Apparel Packaging Solutions

- Garment flat pack dust covers
- Garment hangers and clips



Picking the Right “Green” Bag

Natur-Tec®



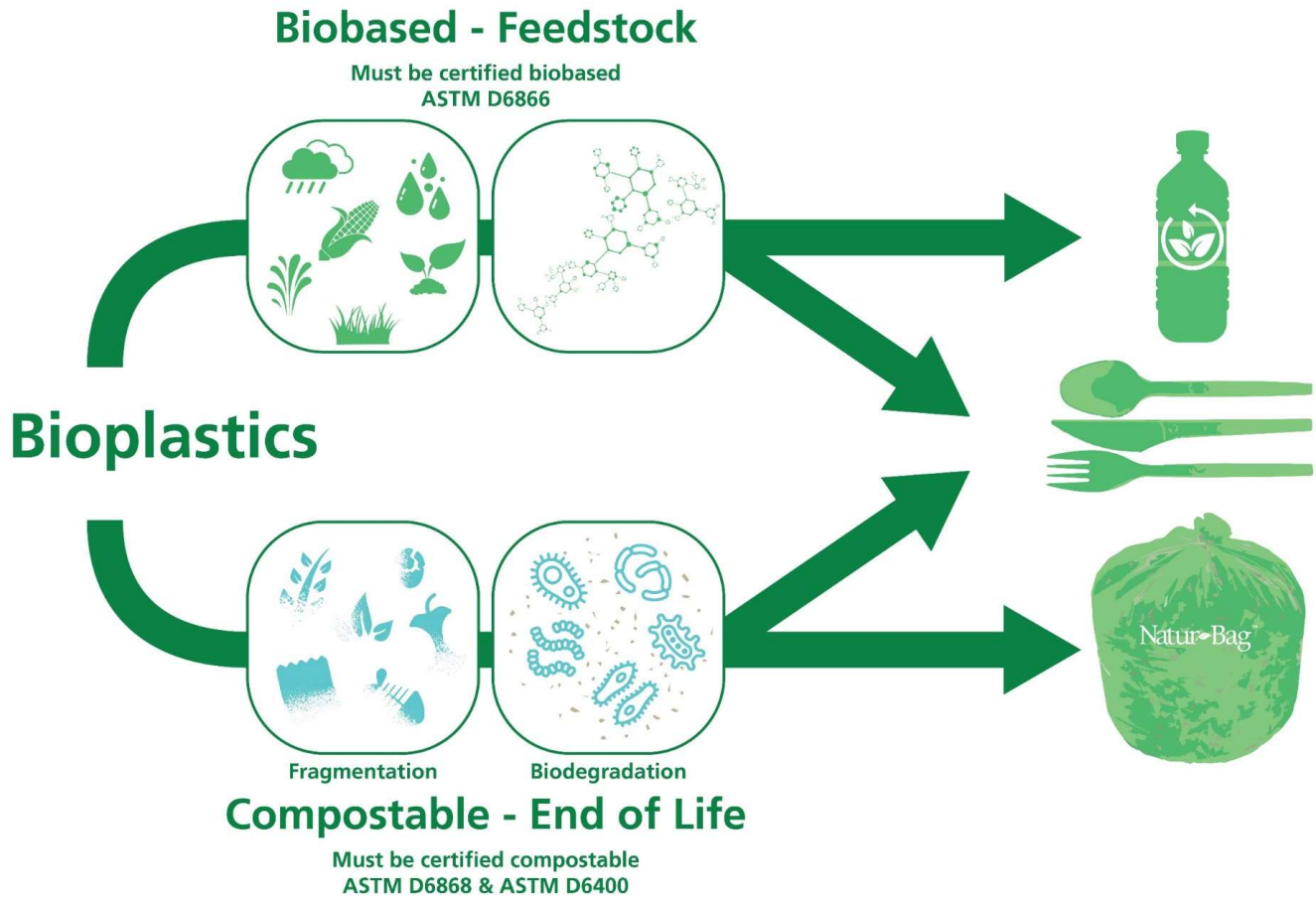
Recycled Liners (often referred to as “repro” or PCR/PCW.) *Ideal for recycling and land fill applications, or when a client does not have access to a compost facility.*

Certified Compostable Liners (BPI, CMA): *Ideal for organic collection and segregation initiatives that will end up in compost systems.*

Oxo-Degradable, Oxo-Biodegradable, Degradable, etc. Cheaper than compostable products, bags made from this technology are considered to be worse for the environment than products that don't degrade.

There is no benefit from using oxo-degradable plastic products.

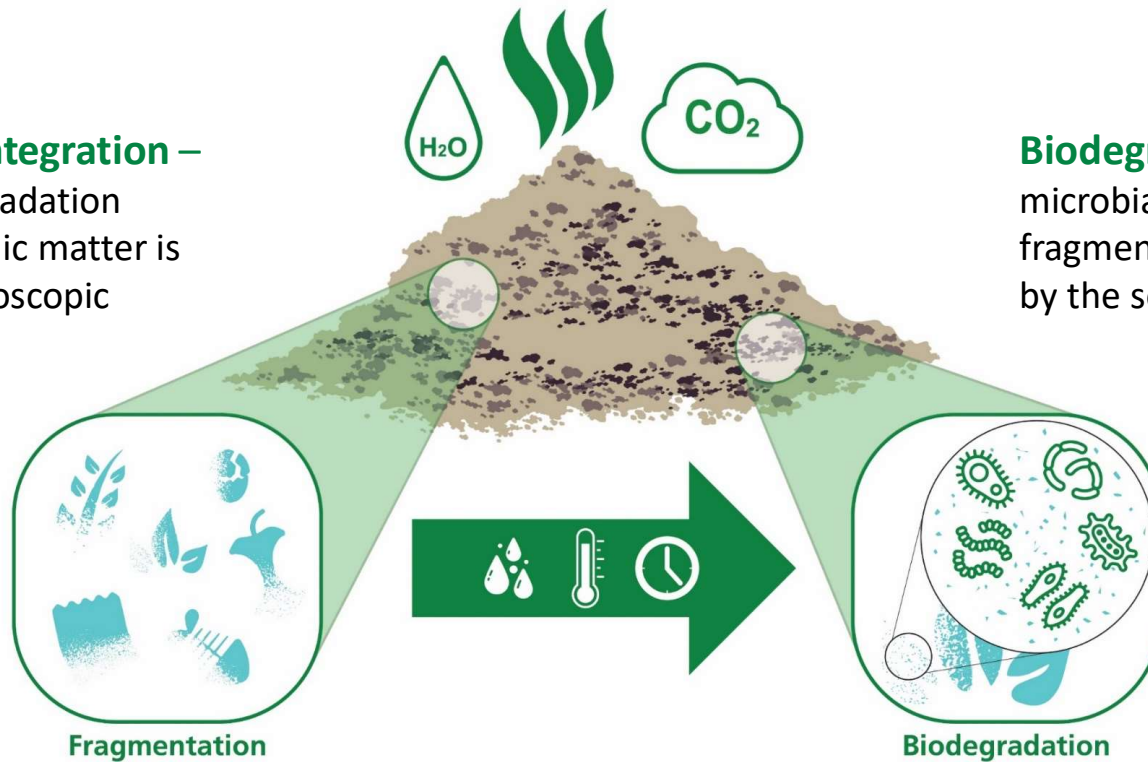
What are "Bioplastics"?



Biobased is not the same as Compostable/Biodegradable



Fragmentation/Disintegration – first step in the biodegradation process, in which organic matter is broken down into microscopic fragments



Biodegradability – complete microbial assimilation of the fragmented product as a food source by the soil microorganisms.

Compostability – complete assimilation *within 180 days* in an industrial *compost environment*.

Regulatory Considerations for Natur-Bag Products



ASTM Compliance

ASTM D6400



Certification

BPI



Field Testing

CMA



100% Certified Biodegradable & Compostable

Features:

- Certified Compostable by the BPI (Biodegradable Products Institute) and TÜV Austria
- Meets ASTM D6400 and EN13432 standard specifications for compostable plastics
- Does NOT contain any polyethylene or other conventional plastics
- Does not contain BPA or PFAS (polyfluoroalkyl substances)
- Compliant with CA, MD, MN, and WA state policies for compostable plastics
- Approved for use in Cedar Grove Compost Systems (CMA-I)
- Engineered strong, industrial size liners (23 gallons and up) will hold up to 80 pounds
- Star seal, packed perforated on a roll
- Prevents odors and keeps bins and containers clean.



First Production Lot



Victoria Bay

Victoria Bay® Compostable Liners



Item Part Number	Item Description	Bag Dimensions	# Bags per Case	Case Pack
VBLHC222975E	13 Gallon Victoria Bay Compostable Liner	22" x 29" 0.75 mil	250	25/roll x 10 rolls
VBLHC303980E	30 Gallon Victoria Bay Compostable Liner	30" x 39" 0.8 mil	200	25/roll x 8 rolls
VBLHC404685E	32 Gallon Victoria Bay Compostable Liner	30" x 46" 0.85 mil	120	20/roll x 6 rolls
VBLHC334010E	33 Gallon Victoria Bay Compostable Liner	33" x 40" 1.0 mil	120	20/roll x 6 rolls
VBLHC334080E	33 Gallon Victoria Bay Compostable Liner Slim Liner	33" x 40" 0.8 mil	200	20/roll x 6 rolls
VBLHC344885E	35 Gallon Victoria Bay Compostable Liner	34" x 48" 0.85 mil	100	20/roll x 5 rolls
VBLHC404610E	45 Gallon Victoria Bay Compostable Liner	40" x 46" 1.0 mil	100	20/roll x 5 rolls
VBLHC424880E	55 Gallon Victoria Bay Compostable Liner Slim Liner	42" x 48" 0.8 mil	100	10/roll x 10 rolls
VBLHC424810E	55 Gallon Victoria Bay Compostable Liner	42" x 48" 1.0 mil	100	20/roll x 5 rolls
VBLHC385880E	58 Gallon Victoria Bay Compostable Liner	38" x 58" 0.8 mil	100	20/roll x 5 rolls
VBLHC476080E	64 Gallon Victoria Bay Compostable Liner	47" x 60" 0.8 mil	60	10/roll x 6 rolls
VBLHC545990E	96 Gallon Victoria Bay Compostable Liner	54" x 59" 0.9 mil	60	10/roll x 6 rolls



Competitive Brands



Victoria Bay® Product Positioning Compared to Competitive Brands

Competitive Brand	General Description	Performance	Shelf Life	Curbside Life	Sizes Available
Bio-Bag®	First to market, high brand awareness, premium pricing, large retail presence, film contains Mater-Bi® compound which contains starch.	Victoria Bay	Victoria Bay	Victoria Bay	=
Bio-Tuf® by Heritage	Large industrial and food service distribution presence. Closest competitor in terms of quality and price.	=	=	=	Victoria Bay
Code Green® by Republic Bag	Large regional distribution presence. Low cost competitor. Film contains Mater-Bi® compound which contains starch.	Victoria Bay	Victoria Bay	Victoria Bay	=
EcoSafe D6400® by Plastic Solutions Ltd	Limited distribution reach. Larger liners tend to be thin (0.85 mil) driving down price. Uses Heritage compound.	Victoria Bay	=	=	=
Bag to Nature® by Indaco	Limited distributor reach. Decent retail presence, “pink” bags, PLA base film.	Victoria Bay	=	Victoria Bay	Victoria Bay
ReNew® One Earth® by Onyx Packaging	Limited distributor reach. Very low cost competitor. Poor performance properties. Uses low grade, off brand compound.	Victoria Bay	Victoria Bay	Victoria Bay	Victoria Bay
<p>Keys:</p> <p>Victoria Bay Indicates Victoria Bay is better than competition = Indicates Victoria Bay is approximately equal to competition.</p> <p>Notes:</p> <ul style="list-style-type: none"> •“Performance” covers mechanical strength properties (Dart, Elongation and Tensile), look and feel of the finished product •“Shelf Life” is a measure of how long a compostable bag will last before degradation of film properties. •“Curbside Life” is a measure of how long a compostable bag will handle organics before there is degradation in the film. •“Sizes available” indicated breadth of bag sizes offered. 					

Natur-Bag® Stock Offerings



Natur-Bag® T-Shirt Style Shopper Bag Offerings

Item Part Number	Item Description	Bag Dimensions	# Bags per Case	Case Pack
NT1075-X-00004	Natur-Bag Medium Shopper	16.5" x 19.5" 0.75 mil	500	50/pk x 10 pks
NT1075-X-00005	Natur-Bag Large Shopper	18.5" x 21" 0.9 mil	500	50/pk x 10 pks



Natur-Bag® Produce Bag

Item Part Number	Item Description	Dimensions	Bags per Case	Case Pack
NT1075-X-00006	Natur-Bag Compostable Produce Bag	15" x 17"	1,200	300/roll x 4 rolls

In 2022, **Imperial Dade** helped their clients divert more than **29,340,712 Pounds** of food scraps and organic waste from landfills. The equivalent of...



20,010,366 pounds of CO2 saved per year



1,973 average cars driven for one year



891,876 gallons of gasoline consumed in one year



The energy use of 1,093 homes in one year



343,612 incandescent lamps switched to LEDs



The weight of 323 Boeing 737's

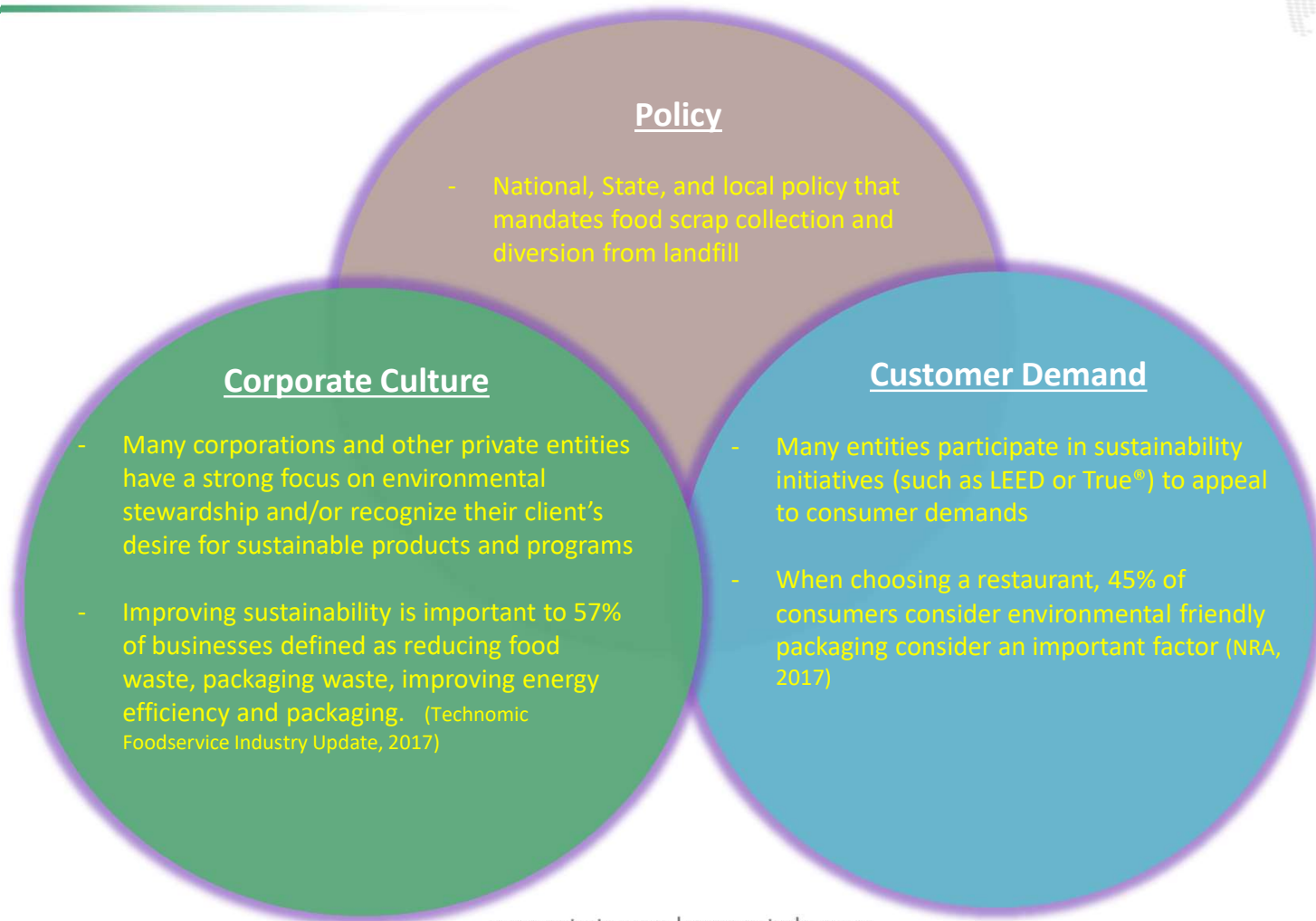


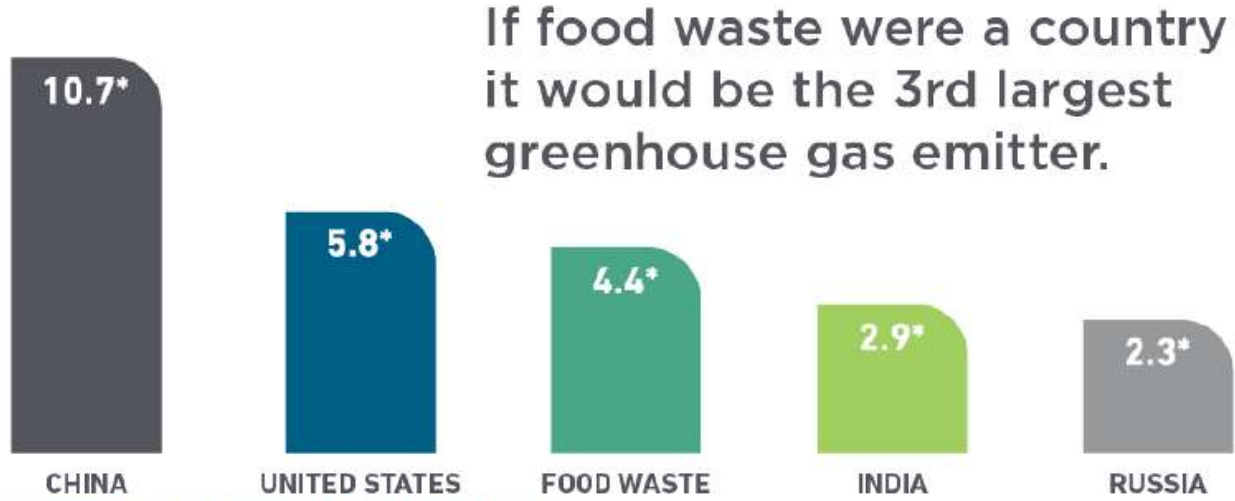
Calculations based on the EPA WARM Model.

Visit www.epa.gov/warm to learn more.

www.naturtec.com | www.naturbag.com

Drivers for Diversion & Bioplastics



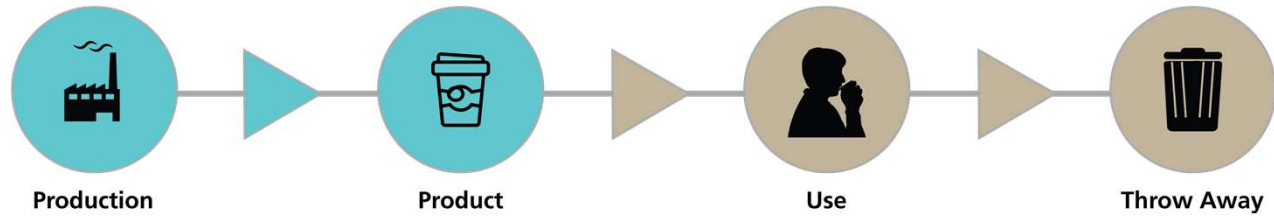


Source: WRI's Climate Data Explorer (2011)

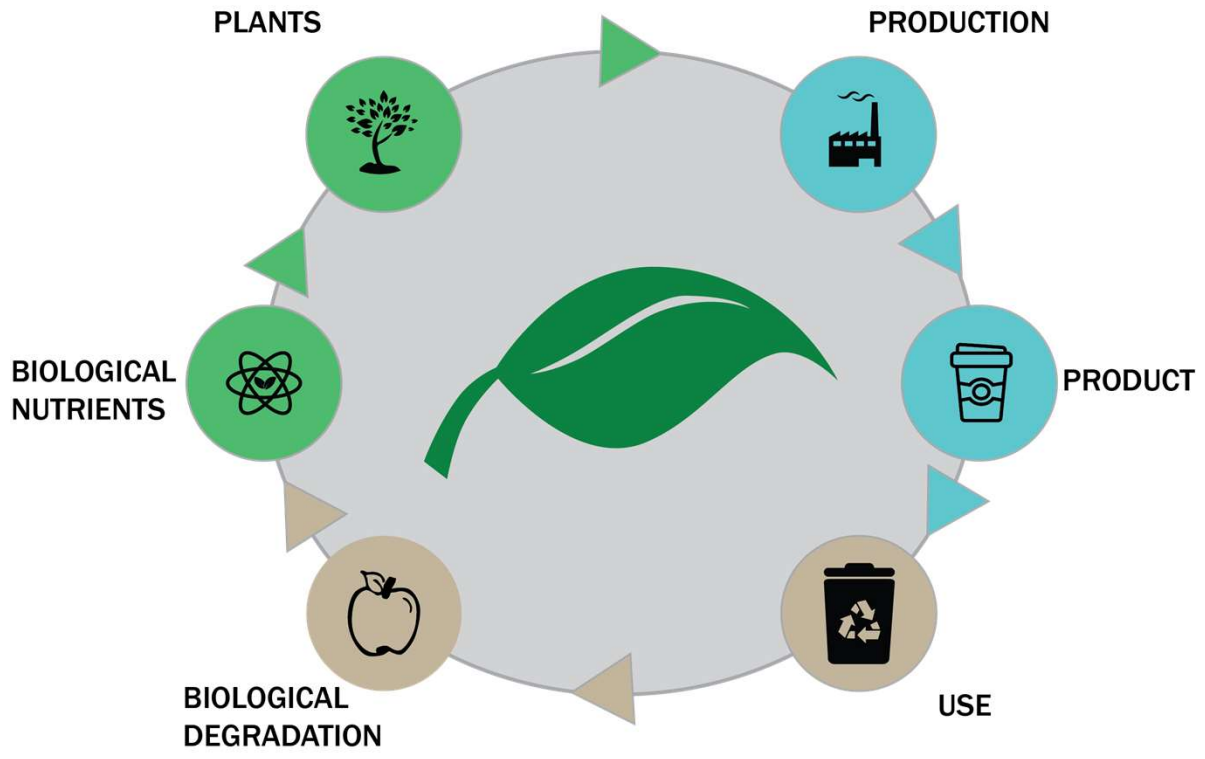


*GT CO₂E

Why are we Talking About Plastic Waste?



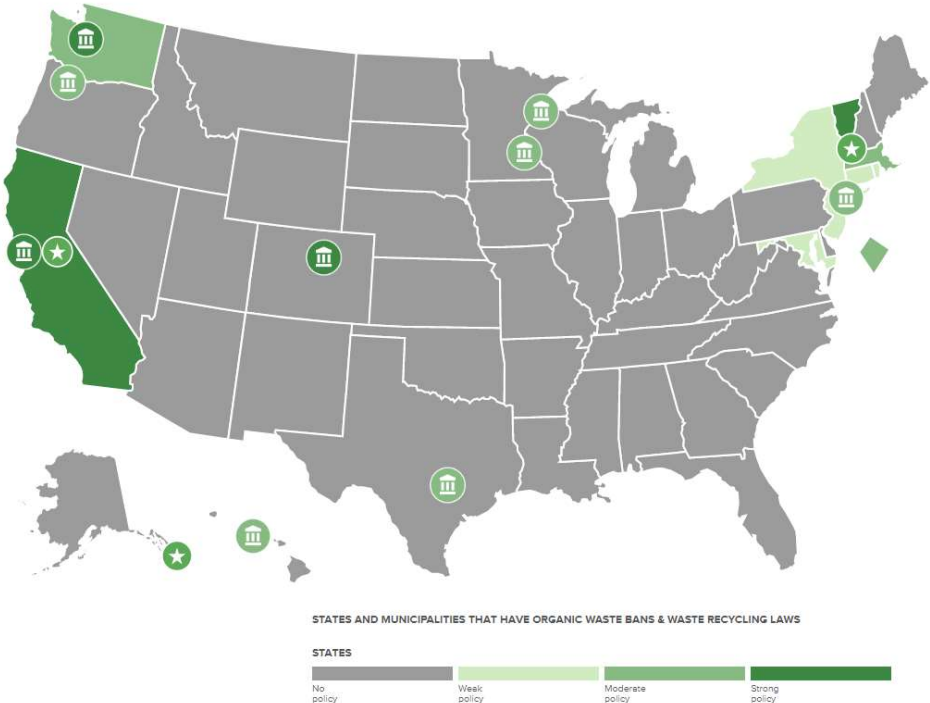
Rethink Packaging: The Circular Economy



SUSTAINABLE MATERIAL FLOW IN A CIRCULAR ECONOMY

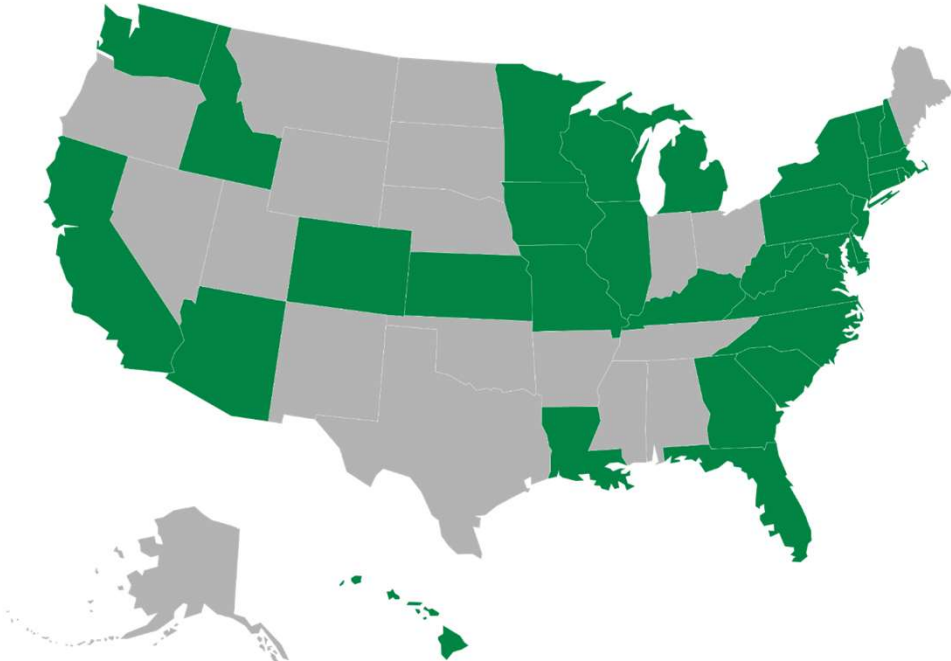
Two main policy types that influence our business:

Organic Diversion Legislation



<https://policyfinder.refed.com/>

Foodservice Packaging Legislation



Approximately **290** proposed pieces of legislation relating to Foodservice Packaging in **31** states

- Source: FPI

Policy trends to be aware of:

- Ban on PFAS (“forever chemicals”)
- Infrastructure
 - Federal: The COMPOST Act and the Bipartisan Infrastructure Law (HR 3684)
- Extended Producer Responsibility (EPR)
 - CA and WA (among 20+ states)
- Labeling Laws
- Single use plastic bans
 - Straws, utensils, etc.



Zero-Waste Programs



“Natur-Tec technologies are enabling tools that help our clients achieve their sustainability goals of zero-waste via organic recycling.”



Zero Waste Program

Considerations and Enablers



- Organizational buy in (from top to bottom)
- Know and understand local MSW policy
- Know and understand existing hauling, concessionary contracts, lease agreements, etc.
- Engage diversion stakeholders (haulers, processors, etc.)
- Establish baseline metrics with on-going waste audits.



- **On-going staff training and engagement**
 - Why are we doing this? What happens “stuff we throw away”?
 - Part of on-boarding schedule (for new employees)
 - Lunch and learns (status of programs, educational, etc.)
- **Control product supply: compostable, reuse, and recycle**
- **Readily available sorting stations with effective signage**



Target Client Profile



- Office buildings with LEED® initiatives – cafeterias, restrooms, etc.
- Restaurants and food service (BOH and FOH)
- Grocery stores (BOH and FOH)
- Universities and colleges – cafeterias, restrooms, etc.
- Hospitals and care centers
- Sporting venues (stadiums, training facilities, etc.)
- School districts (K-12)
- Municipalities
- Compost facilities and haulers
- Wineries
- Festivals, Fairs, Farmer Markets, etc.
- Retail “Green” Shops





Sales Considerations



1. How to identify compostable liners or organic diversion initiatives:

- Compostable bags and liners are normally green, natural, or brown in color.
- Lining green or brown bins found in kitchens, cafeterias, restrooms, etc.
- Educational signs, multiple color bin and sort stations (blue, black and green).

2. Where to look:

- Kitchens, cafeteria, loading docks, restrooms, etc.

3. Inquiry questions for organic collection and waste segregation:

- “Is your building LEED compliant?”
- “Do you have a zero-waste initiative?”
- “Do you divert your organics – cafeteria, restroom, etc.?”

4. Who to speak with at your client:

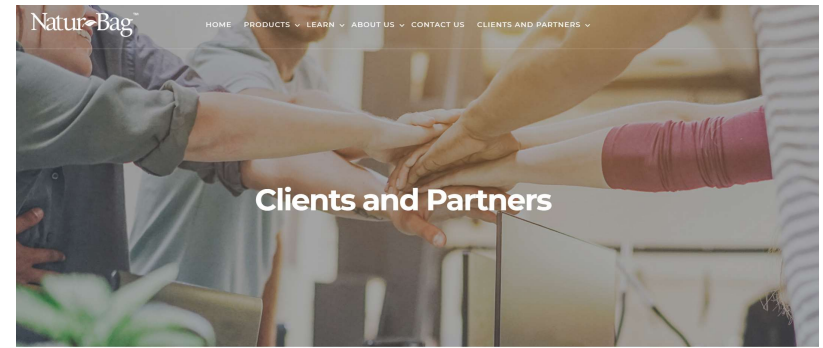
- Building maintenance department
- Designated environmental lead
- Purchasing

“Victoria Bay liners are enabling tools that help our clients achieve their sustainability goals, whether it be zero-waste or food scrap collection.”



How Natur-Tec Helps You Grow

- Field support (on-site visits and customer engagement)
- Product samples
- Policy and industry insights
- Marketing and educational support
 - Signage
 - CO2e posters
 - Right-Size Tool



We value our clients and partners and welcome the opportunity to support your efforts!

WE'VE PUT TOGETHER SOME EXCELLENT RESOURCES THE HELP YOU FURTHER EXPLORE OUR PRODUCTS, BIOPLASTICS, AND ZERO-WASTE. HERE YOU CAN EXPLORE THE NATUR-TEC® ONLINE TOOLS, A VALUABLE DOCUMENT LIBRARY, AND EDUCATIONAL INFORMATION ON ZERO-WASTE PROGRAMS. IF YOU NEED MORE DETAILED INFORMATION, OR NEED SUPPORT, PLEASE LET US KNOW.

Need support? Get in touch with us today!

www.naturbag.com/partners

Password: **#compost**

Victoria Bay Product Sheet



Victoria Bay
COMPOSTABLE LINERS

Victoria Bay® compostable liners are ideal for the collection of food waste and other organics. They integrate seamlessly into organic collection and zero waste programs. The use of compostable liners also helps keep bins clean and dry reducing the need for washing bins and the 'ick' factor associated with organics collection.

- Certified compostable by the BPI (Biodegradable Products Institute).
- Meets ASTM D6400 standard specifications for compostable plastics.
- Does not contain any persistent, non-biodegradable polyethylene and similar plastics.
- Engineered strong, industrial size liners (23-gallon liners and up) will hold up to 80lbs.

Victoria Bay® Stock Product Industrial Offerings

Item#	Description	W x H	Case Qty	Case Wt (lbs)
VBLHC222975E	22x29 13GAL GRN	22" x 29" 0.75mil	250	10.9
VBLHC303980E	30x39 30GAL GRN	30" x 39" 0.8mil	200	16.1
VBLHC304685E	30x46 32GAL GRN	30" x 46" 0.85mil	120	12.1
VBLHC334080E	33x40 33GAL GRN	33" x 40" 0.8mil	120	10.9
VBLHC334010E	33x40 33GAL GRN	33" x 40" 1.0mil	200	22.6
VBLHC344885E	34x48 35GAL GRN	34" x 48" 0.85mil	100	12.6
VBLHC404610E	40x46 45GAL GRN	40" x 46" 1.0mil	100	15.8
VBLHC424880E	42x48 55GAL GRN	42" x 48" 0.8mil	100	13.8
VBLHC424810E	42x48 55GAL GRN	42" x 48" 1.0mil	100	17.3
VBLHC385880E	38x58 58GAL GRN	38" x 58" 0.8mil	100	15.1
VBLHC476080E	47x60 64GAL GRN	47" x 60" 0.8mil	60	11.6
VBLHC545990E	54x59 96GAL GRN	54" x 59" 0.9mil	60	14.7

XXXXXXXX

For more information please contact your sales representative

victoriabay.com

Victoria Bay
COMPOSTABLE LINERS

Container	Item Number	Size W x L & H mil	Recommended Use
40-50 Quart bin	VBLHC222975E	22" x 29" 0.75mil	Food scraps and paper towel collection, kitchen and coffee station bin
Slim Jim* or Similar	VBLHC304685E	30" x 46" 0.85mil	Food scraps, paper towel, and lighter organic collection use
	VBLHC334080E	33" x 40" 0.8mil	Food scraps, paper towel, and lighter organic collection use
	VBLHC334010E	33" x 40" 1.0mil	Food scraps collection co-mingled with food service packaging, heavy duty bag
	VBLHC344885E	34" x 48" 0.85mil	Food scraps, paper towel, and lighter organic collection use
20 Brute*	VBLHC303980E	30" x 39" 0.8mil	Food scraps, paper towel, and lighter organic collection use
32 Brute* or Similar	VBLHC304685E	30" x 46" 0.85mil	Food scraps, paper towel, and lighter organic collection use
	VBLHC334080E	33" x 40" 0.8mil	Food scraps, paper towel, and lighter organic collection use
	VBLHC334010E	33" x 40" 1.0mil	Food scraps collection co-mingled with food service packaging, heavy duty bag
44 Brute* or Similar	VBLHC344885E	34" x 48" 0.85mil	Food scraps, paper towel, and lighter organic collection use
	VBLHC404610E	40" x 46" 1.0mil	Food scraps collection co-mingled with food service packaging, heavy duty bag
	VBLHC424880E	42" x 48" 0.8mil	Food scraps and paper towel collection, cost effective liner for lighter loads
55 Brute* or Similar	VBLHC424810E	42" x 48" 1.0mil	Food scraps collection co-mingled with food service packaging, heavy duty bag
	VBLHC385880E	38" x 58" 0.8mil	Food scraps and paper towel collection, cost effective liner for lighter loads
	VBLHC476080E	47" x 60" 0.8mil	Food scraps collection co-mingled with food service packaging, heavy duty bag
32 Gallon Curbside Cart	VBLHC385880E	38" x 58" 0.8mil	Liner for curbside and event food scrap collection programs
	VBLHC404610E	40" x 46" 1.0mil	Heavy duty bag for curbside and event food scrap collection programs co-mingled with food service packaging
	VBLHC385880E	38" x 58" 0.8mil	Liner for curbside and event food scrap collection programs
48 Gallon Curbside Cart	VBLHC424880E	42" x 48" 0.8mil	Liner for curbside and event food scrap collection programs
	VBLHC424810E	42" x 48" 1.0mil	Heavy duty bag for curbside and event food scrap collection programs co-mingled with food service packaging
64 Gallon Curbside Cart	VBLHC476080E	47" x 60" 0.8mil	Liner for curbside and event food scrap collection programs
	VBLHC491990E	54" x 59" 0.9mil	Liner for curbside and event food scrap collection programs

Square Container

Round Container

Follow these steps to choose the optimal Victoria Bay® liner:

All measurements are in inches and taken from inside dimensions

Step 1: Determine container dimensions.

Square Container:

- Measure all 4 sides
- Measure the base diagonal
- Measure the vertical length

Round Container:

- Measure the base and top diameters
- Measure the vertical length

Step 2: Calculate the liner size.

Square Container:

Liner width = Sum of all 4 sides ÷ 2

Liner length = Container length + (base diagonal ÷ 2) + 4" (to account for overhang)

Round Container:

Liner width = Top diameter X 3.14 ÷ 2

Liner length = Container length + (base diameter ÷ 2) + 4"

Step 3: Reference the Victoria Bay® Stock Product Offerings table on the previous page to select the appropriate Victoria Bay® liner.

We recommend using Victoria Bay® liner samples to ensure the determined liner size works for you.

For more information please contact your sales representative

victoriabay.com

Natur-Tec State and Local Policy Documents



State/Region	Statute/Code	Target
New York	§ 27-2201 (2019)	All food waste generators which (if within 20 miles of a certified organics recycling facility) at a single location, generate more than 3 tons/year of food scraps must separate their excess edible food for donation and, if within 25 miles of a compost facility, must separate organics and residual food waste from all other waste.
New York City, NY	Local Law 146 (2013)	Certain New York City businesses will be required by law to separate their organic waste (Establishments covered by Business Organic Rules) <ul style="list-style-type: none"> All food service establishments in hotels with 100 or more rooms All food service vendors in arenas and stadiums with seating capacity of at least 15,000 people Food manufacturers with a floor area of at least 25,000 square feet Food wholesalers with a floor area of at least 20,000 square feet
Massachusetts	MA Solid Waste Policy 1990	310 CMR 19.000 - Commercial Organic Material Waste Ban The latest regulations provide compliance guidance for generators and haulers of commercial food waste, as well as facilities that accept it. Implementation of this waste ban began in 2014 with changes in the waste ban effective in 2021 and 2022. <ul style="list-style-type: none"> 2021: Large generators > 1 ton/year of food waste 2022: Medium generators 5 - 99 ton/year
New Jersey	A9726 - Food Waste Recycling	Requires large generators of food waste to source separate food waste from all other solid waste, if located within 20 miles of an authorized food waste recycling facility.
Rhode Island	§ 23-18.9-17	Commercial food wholesalers and distributors, restaurants, food manufacturers or processors, including medical and educational institutions, and other institutions generating food waste, are required to separate organics at the source, and arrange for materials to be composted, anaerobically digested, or recovered through another approved recycling method (if within 15 miles of a certified organics recycling facility).
Connecticut	§ 22a-226e	Requires organic generators as defined by CT source separated organics law (if within 20 miles of a certified organics recycling facility) providing organic waste to source-separate their organic materials, and either compost or treat source-separated organic materials on-site using permitted equipment, or require such source-separated organic materials are properly received at an authorized source-separated organic material composting facility.
Vermont	A) § 5, 285, Act 208 B) Act 148	A) All food waste is banned from disposal in landfills. B) All food scrap generators (if within 20 miles of a certified organics recycling facility) which generate food residuals are required to source-separate food residuals from other solid waste, and either arrange for the transfer of food residuals to a location that manages food residuals, or manage food residuals on-site.

To learn more about these and other state, regional, and municipal policies and legislation regarding food and organic waste visit www.naturbag.com/legislation/.

Did You Know?

Food waste is the second largest category of municipal solid waste (MSW) sent to landfills in the United States, accounting for approximately 18% of the waste stream. That is over 30 million tons of food waste that the U.S. sends to the landfills each year. Food scraps are a valuable resource. When diverted from a landfill to an industrial compost facility, food scraps are converted into compost, a nutrient rich soil amendment helping the overall health of the soil.

Additionally, compost absorbs three times the amount of water than untreated standard soil, acts as a water filter (helping watersheds, water runoff, etc.), improves soil structure and porosity.



Organic Collection Laws for NYC

Policy Drivers and Considerations

Based on various city and industry waste characterization studies, over 31% of what is in landfill can be organic and diverted to a compost and/or an anaerobic digester (AD) facility. This includes food waste, yard and compostable paper waste. According to planNYC, New York City has a stated goal to achieve 75% soil diversion from landfill by 2020 for both residential and commercial. To achieve this diversion goal, both new organic collection programs must be implemented.

In effort to meet these landfill diversion goals, New York City has implemented an important legal measure defined below:

Local Law 146 of 2013 Commercial Organic Collection Program

Beginning July 19, 2016 (updated in 2018 and 2020), certain New York City businesses will be required by separate their organic waste. If your business meets the minimum requirements outlined below, you must comply with the business organic rules:

Establishments covered by Business Organic Rules include:

- All food service establishments in hotels with 100 or more rooms (2020)
- Arenas and stadiums with seating capacity of at least 15,000 people
- Food manufacturers with a floor area of at least 25,000 ft²
- Food wholesalers with a floor area of at least 20,000 ft²
- Foodservice establishments with a floor area of at least 7,000 ft²
- Chain food service establishments of 2 or more NYC locations with combined floor area of 8,000 ft² or more
- Retail Food Stores having 10,000 to 24,999 ft²
- Chain Retail Food Stores of 3 or more NYC locations with combined floor area 10,000 ft² or more
- Food Preparation Locations having 6,000 ft² or more
- Catering Establishments hosting on-site events to be attended by more than 100 people
- Temporary Public Events to be attended by more than 500 people

Businesses covered by this proposal are given the option to arrange for collection by a private carter, transport organic waste themselves, or process the material on-site. Suitable processing methods include composting, anaerobic digestion, or food waste grinder is not permitted.

Did You Know?
Disposal fees for landfill in New York City exceed \$100 per ton (referred to as a "tipping fee") while similar fees to compost facilities can be as low as less than half of that amount!

How Will This Legislation Affect You?

Businesses and commercial entities will be required to establish recycling programs to meet diversion goals established in this bill. Setting up these programs will require, but not limited to, arranging contracts with waste haulers, establishing dedicated sort stations and signage, on-going employee training, and engagement. The use of compostable products (such as liners, food service ware, etc.) will help participation by eliminating sort anxiety and will reduce contamination concerns.

- Natur-Bag® liners are ideal solutions where organic waste and food scraps are collected such as cafeterias, coffee stations, restrooms (paper towel), etc. at the following market targets:
- Class A Office buildings with LEED® initiatives
 - Municipalities
 - Universities and colleges
 - Restaurants
 - School districts (K-12)
 - Sporting venues
 - Wineries
 - Sporting venues
 - Festivals, Farmer Markets, etc.



Important CA State Laws

In California, compostable materials including food and vegetable matter statewide disposed waste stream*. Of these materials, food is the largest amount of these organic materials going to landfill, and to help reduce it, legislature has passed three important bills: SB 1383 (2016), AB 1826 (2014)

SB 1383 (2016)

Requires the development of a comprehensive organic waste recovery infrastructure statewide, as well as a significant commitment to education and enforcement by local governments and waste haulers. Goal of SB 1383 are a 50% reduction in the disposal of organic waste by 2024 and a 75% reduction in the disposal of organic waste by 2025, and 201 of edible food to be recovered for human consumption by 2025.

AB 1826 (2014)

Establishes a mandatory commercial organic waste diversion program, requiring businesses that generate a specified quantity of organic waste to arrange for recycling services. This bill goes into effect January 1, 2016 with staggered implementation through 2020.

To view the policy entirely, visit: www.naturbag.com/legislation/



SB 1335 (2013)

Impacts all food service packaging (FSP) sold into facilities that are state or those under contract with the state. This includes: airports, universities, a single-use packaging to be reusable, recyclable, or certified compostable. There are strict regulations regarding the rate at which certified compost industrial composting facility. Currently, these products must fully biodegrade. It is important to note, as of January 2022 there are no certified compost day requirement. Currently, **bags, liners, cutlery, lids, and straws are therefore, Natur-Bag liners are not affected!**

Natur-Bag liners are certified compostable by the BPI and meet all laws regarding compostable packaging.

Visit www.naturbag.com to learn more about Natur-Bag



Washington State Compostable Packaging Policy

Compostable Products Labeling Law

The Washington State legislature has passed a statute (2019 c 265 § 1, (2020)) restricting the use of "compostability" and "biodegradability" claims for plastic products including food service ware, that do not meet uniform standards identified by the state. The statute specifies that products labeled as "compostable" must either be comprised only of wood or fiber-based substrate, or must meet the ASTM D6400 composting standard.

Products must also meet FTC green guide labeling requirements, and labeled with a logo indicating a third-party certification. The bill requires that food service products along with certain film products that meet ASTM standards must be identified as "compostable," not "biodegradable," "degradable," "decomposable," or "eco-degradable." This statute went into effect on July 1, 2020.

Single-use Plastic Bag Ban in WA

Washington has also enacted a plastic bag ban on single-use plastic carryout bags. In addition to the ban of single-use plastic bags, this policy includes fees for paper and reusable plastic bags. An optional fee may apply for certified compostable bags. This legislation was implemented on October 1, 2021. To learn more, visit www.ecology.wa.gov.

How Will This Legislation Affect You?

All businesses, manufacturers, wholesalers and distributors, that are involved in labeling, selling and marketing of compostable plastic products and food service packaging, must ensure products sold, offered for sale or distributed for use in Washington meet the required standards specified in 2019 c 265 § 1. Additionally, manufacturers or suppliers of bags that meet the ASTM D6400 standard and are distributed or sold by retailers must ensure bags are readily and easily identifiable as "compostable".



All Natur-Bag® and Natur-Ware® products are marked "Compostable" and feature the BPI Logo.

Did You Know?

Food waste is the largest component of Washington's municipal solid waste stream. Over all, food waste including edible food that is thrown away makes up 17% of all garbage, 24% of residential garbage, and 19% of commercial garbage. Food scraps are a valuable resource. When diverted from a landfill to an industrial compost facility, food scraps will convert into compost, a nutrient rich soil amendment helping the overall health of the soil.

Additionally, compost absorbs three times the amount of water than untreated standard soil, acts as a water filter (helping watersheds, water runoff, etc.), and improves soil structure and porosity. To learn more about how healthy soils benefit the environment in Washington, visit www.soilforrain.com.

- Helps provide insight into policies related to food scrap collection and compostable packaging at both the state and municipal level.
- Defines expectations and how Natur-Tec can help our clients
- Can be customized to the client
- Hosted on www.naturbag.com and also available as PDF



Natur-Tec Educational Documents

Reference Books for Sales Representatives

- Provides general understanding of products, bioplastics industry, and organic diversion initiatives
- Intended to help provide high level overview of zero-waste programs, how compostable products help, and operational expectations.
- Reference information for Sales Representatives - **not intended for clients.**



Natur-Tec® Guidebook
Reference Book for Sales Representatives



Compostable Products for a Sustainable World



Natur-Tec®
Zero-Waste Handbook





Your Natur-Tec Team



Michael Leibowitz (NY, NJ, PA)

Osprey Sales

Phone: 516.909.7228

Email: mikeny@ospreysales.com

Jim Seerey (MD, VA, DC, DE, PA)

Osprey Sales

Phone: 410.913.5547

Email: jim@ospreysales.com

Dan Rubinstein (CT, MA, VT, RI, ME, NH, NJ)

Osprey Sales

Phone: 410.908.5384

Email: dan@ospreysales.com

Rick Lombardo

Sr. Director, Business and Market Development

Phone: 517.230.5995

Email: rlombardo@ntic.com

Kristen Jarchow

Account Specialist

Phone: 763.225.6611

Email: kjarchow@ntic.com

Mercy Oyadare

Marketing and Communication Specialist

Phone: 763.225.6652

Email: moyadare@ntic.com

 Thank you!

