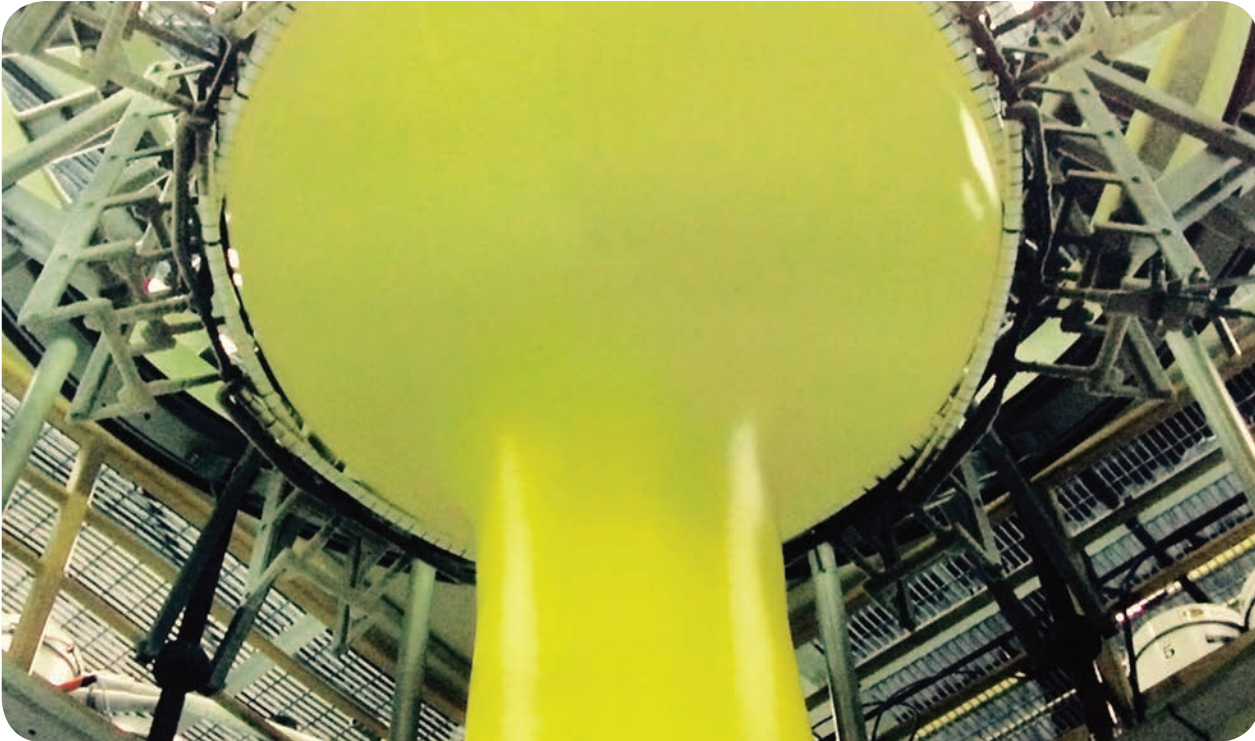




Product Catalog



A Hilex Poly™ bag can enhance your brand statement to its fullest potential. Hilex Poly provides the support you need during the packaging development, all the way through production and consumer use. You can rely on Hilex Poly for industry leading expertise and quality production capabilities to ensure your brand's creative design is well represented in your packaging.

The Novolex™ Brand Advantage

Hilex Poly, a Novolex brand, is the industry's leading manufacturer of plastic retail bags, produce bags and other customer focused systems. Hilex Poly is home to **Bag-2-Bag®**, the largest closed loop recycling program in the United States where plastic retail bags are turned back into resin pellets and then back into new retail bags made with post-consumer content; reducing the shopping carbon footprint of the consumer and preserving natural resources. **Read more about Bag-2-Bag on page 25.**



Table of Contents

NEW

Eco Blend® 75 Thank You T-shirt Bags



NEW

Tamper Evident Delivery Bags



PRODUCTS

T-shirt Bags

- 4-5 QuikMate EZ®
- 6 **NEW!** Eco Blend® 75

Premium T-shirt Bags

- 7 Ultra-Prime®
- 8 Ultra-Prime® Reusable
- 9 Ultra-Post™ Reusable

Specialty Plastic Bags

- 10 Pre-Printed Legislative
- 11 Sine Wave
- 12 **NEW!** Tamper Evident
- 13 Soft Loop Handle
- 14-15 Die Cut Merchandise

Produce Bagging Systems

- 16-17 RollStar®
- 18-19 QuikStar®

Convenience Store Bagging Systems

- 20 RollMate® Bagging System
- 21 CheckMate™ Bagging System
- 21 Header Bagging System

Specialty Products

- 22 Ice Bags
- 23 Cancer Awareness Bags

SUSTAINABILITY

- 24 The Journey
- 25 Bag-2-Bag® Recycling Program
- 26-27 EcoLogo ATP-001 Certified Bags
- 28 Gray Is the New Green
- 28 How2Recycle Label
- 29 Sustainability Partnerships

BAG EDUCATION

- 30-33 Plastic Bags 101
- 34-35 Glossary of Terms

T-shirt Bags



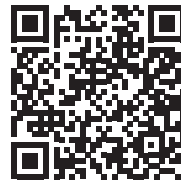
The Convenient, Cost Effective and Practical Plastic Bag Solution

More Than a Bag

Bags are just a starting point. Novolex excels in providing our customers with total bagging solutions that take into account your retail format, store design and check stand configuration.

When & Where You Need Them

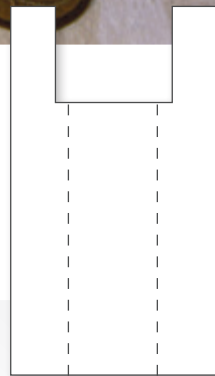
We will recommend dispensing systems that keep bags within reach and the counter free of clutter, mounting hardware that's easy to install and T-shirt bags in a wide range of sizes with easy-open features. Novolex also offers planned replenishment programs – no more worrying about re-orders.



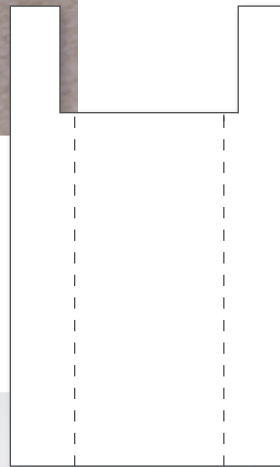
Learn More

Bagger training –
literature and videos

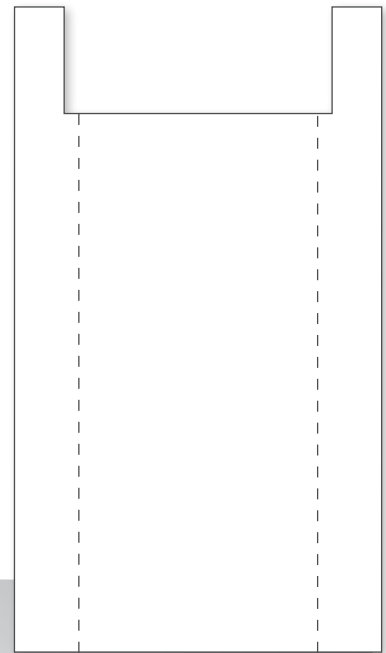
T-shirt Bags: The Difference



Junior
T-shirt Bag



T-shirt
Bag



Jumbo
T-shirt Bag

T-shirt Bags



QuikMate EZ[®]

The Standard in Bagging – from the Leader in Bagging Solutions

QuikMate EZ T-shirt Bags Features:

- Engineered convenient T-shirt bag style with integrated tabs
- Bag sizes to fit any purchase requirements
- Patented easy-open design
- Dispensing systems including racks, trays and compact dispensers for maximizing productivity
- Hardware to fit almost any check stand configuration
- Custom printing provides branding opportunity
- Jumbo T-shirt Bags are also available



Available in standard or custom printing

Item #	Description	Bag Size (Inch)	Gauge (Micron)	Bag Per Case	Case Cube	Cases Per Pallet	TiHi	Min. Order
8553004	Mini	7 x 4 x 16	10	2,000	0.244	96	16 x 6	6 Pallets
8108002	Junior	9 x 5.5 x 18	12	2,000	0.548	60	20 x 3	6 Pallets
8023997	1/7	12 x 7 x 20	13	1,000 or 2,000	0.467	60	12 x 5	6 Pallets
1003426	1/6	12 x 7 x 22	13	1,000 or 2,000	0.467	60	12 x 5	6 Pallets
1009933	Supersize	13 x 8 x 23	15	1,000	0.687	60	12 x 5	6 Pallets

Eco Blend® 75 Thank You T-shirt Bags NEW

75% Recycled Content and Cost Efficient

Performance Features

- Strong T-shirt bag with integrated tabs
- Patented easy-open design
- Designed to fit on standard front-end racks for easy loading
- Made with minimum 75% recycled content
- Made with pride in the US with 100% recyclable HDPE resin



Item #	Description	Bag Size (Inch)	Gauge (Micron)	Film Color	Print	Film Type	Case Pack	Nominal Case Weight (Lbs.)	Cases/Pallet	Ti-Hi	Minimum Order
1029808	Eco Blend® 75	11.5 x 6.5 x 21	13	Black	Thank You	HDPE	500	5.96	132	12 x 11	6 Pallets
1029809	Eco Blend® 75	11.5 x 6.5 x 21	13	Black	Thank You	HDPE	1000	11.92	72	12 x 6	6 Pallets
1029810	Eco Blend® 75	11.5 x 6.5 x 21	17	Black	Thank You	HDPE	500	7.79	120	12 x 10	6 Pallets
1029811	Eco Blend® 75	11.5 x 6.5 x 21	17	Black	Thank You	HDPE	1000	15.58	60	12 x 5	6 Pallets
1029813	Eco Blend® 75	11.5 x 6.5 x 21	13	Dark Green	Thank You	HDPE	500	5.96	132	12 x 11	6 Pallets
1029814	Eco Blend® 75	11.5 x 6.5 x 21	13	Dark Green	Thank You	HDPE	1000	11.92	72	12 x 6	6 Pallets
1029815	Eco Blend® 75	11.5 x 6.5 x 21	17	Dark Green	Thank You	HDPE	500	7.79	120	12 x 10	6 Pallets
1029816	Eco Blend® 75	11.5 x 6.5 x 21	17	Dark Green	Thank You	HDPE	1000	15.58	60	12 x 5	6 Pallets
1029817	Eco Blend® 75	11.5 x 6.5 x 21	13	Chocolate Brown	Thank You	HDPE	500	5.96	132	12 x 11	6 Pallets
1029818	Eco Blend® 75	11.5 x 6.5 x 21	13	Chocolate Brown	Thank You	HDPE	1000	11.92	72	12 x 6	6 Pallets
1029819	Eco Blend® 75	11.5 x 6.5 x 21	17	Chocolate Brown	Thank You	HDPE	500	7.79	120	12 x 10	6 Pallets
1029820	Eco Blend® 75	11.5 x 6.5 x 21	17	Chocolate Brown	Thank You	HDPE	1000	15.58	60	12 x 5	6 Pallets

For multiple truckload orders, please contact your Novolex sales representative to discuss availability. Colors are for reference only and may vary - please refer to physical film samples.

Ultra-Prime®

Premium T-shirt Bags

Ultra-Prime Features:

- Made from prime grade materials, optimized for strength, aesthetics and performance
- Patented EZ Self-opening bag and rack system allows for convenient and easy packing of your take-out containers and other larger items
- Heavier gauge, increased opacity, and superior toughness
- Custom sizes and colors available in truckload quantities



Available in standard or custom printing

Item #	Bag Size (Inch)	Volume Capacity (Liters)	Gauge (Micron)	Film Color	Print	Film Type	Case Pack	Net Poly (Lbs./Case)	TiHi	Min. Order
1026175	11.5 x 7.5 x 21	15.6 liters	15	White	Thank You	HDPE	1500	21.9	12 x 4	4 Pallets
1027401	11.5 x 7.5 x 21	15.6 liters	15	White	Thank You	COEX	1500	21.9	12 x 4	4 Pallets
1027403	13 x 8 x 22	20.0 liters	17	White	Thank You	HDPE	1320	25.8	12 x 4	4 Pallets
1026304	13 x 8 x 22	20.0 liters	17	White	Thank You	COEX	1320	25.8	12 x 4	4 Pallets

Superior Strength in Various Sizes & Gauges

Our sales and customer service team is focused on helping you select the right bag for your shoppers. As an innovator, we lead the industry in providing quality choices tailored to meet your specific application. Simply choose the size and film type, and we will provide you a carryout bag system that is perfect for your store, maximizes value and improves front-end productivity. Top quality and superior strength means more items per bag and shopper loyalty – a win-win value proposition.

Ultra-Prime Premium T-shirt Bags from Novolex are available in a number of stock sizes to streamline the ordering process and reduce lead times.

Ultra-Prime[®] Reusable

2.25 mil Reusable Plastic Bags

Ultra-Prime Reusable Features:

- Tough reusable bag that encourages reuse
- Designed to fit on standard front-end racks for easy loading
- 2.25 mil thick to meet most legislative guidelines for reusable bags
- Made from 100% recyclable LDPE resin
- Extra durable and made with pride in the USA
- Custom colors, sizes and print available in truckload quantities
- Meets EcoLogo ATP - 001 standard



Item #	Bag Size (inch)	Volume Capacity (Liters)	Gauge (MIL/Mic)	Film Color	Print	Film Type	Case Pack	Net Poly (Lbs./Case)	TiHi	Min. Order
1028338	11.5 x 6.5 x 21	15.7 liters	2.25 / 57	White-Pure	Thank You	LDPE	500	26.16	12 x 3	4 Pallet
1029846	12 x 8 x 22	18.9 liters	2.25 / 57	White-Pure	Thank You	LDPE	500	26.16	12 x 3	4 Pallet
1030154	11.5 x 6.5 x 21	15.7 liters	3.0 / 76.2	White-Pure	Thank You	LDPE	375	26.16	12 x 3	4 Pallets

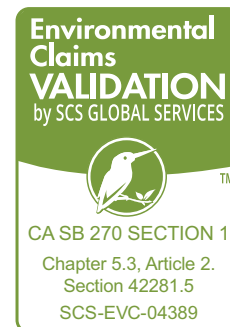


Ultra-Post™ Reusable

2.25 mil – Minimum 20% Third Party Certified Post-Consumer Recycled Content

Ultra-Post Reusable Features:

- Tough reusable bag that encourages reuse
- Minimum 2.25 mil thick to meet most legislative requirements for reusable bags
- Made from a minimum of 20% post-consumer recycled third party certified material
- Made with pride in the USA from 100% recyclable LDPE or MDPE resin
- Designed to fit on standard front-end racks for easy loading
- Meets EcoLogo ATP-001 standard for legislative areas and is compliant with California Senate Bill 270 standards
- Custom print and size available in truckload quantities – contact your Hilex Poly rep for details
- Due to recycled content, there may be slight variations in color



For more information on the EcoLogo, ATP-001 standard requirements see page 27.



**REDUCE
REUSE
RECYCLE**



Item #	Bag Size (Inch)	Volume Capacity (Liters)	Gauge (Mil/Mic)	Film Color	Print	Film Type	Case Pack	Net Poly (Lbs./Case)	Ti-Hi	Min. Order
1028278	11.5 x 6.5 x 21	15.7L	2.25 / 57	White	Thank You	LDPE	500	26.16	12 x 3	4 Pallets
1028321	11.5 x 6.5 x 21	15.7L	2.25 / 57	Light Gray	Thank You	LDPE	500	26.16	12 x 3	4 Pallets
1029646	11.5 x 6.5 x 21	15.7L	2.25 / 57	White	Thank You	MDPE	500	26.16	12 x 3	4 Pallets
1028323	11.5 x 6.5 x 21	15.7L	2.25 / 57	Light Gray	Thank You	MDPE	500	26.16	12 x 3	4 Pallets
1028648	11.5 x 6.5 x 21	15.7L	2.25 / 57	White	Reuse - Hex	LDPE	500	26.16	12 x 3	4 Pallets
1028649	11.5 x 6.5 x 21	15.7L	2.25 / 57	Light Gray	Reuse - Hex	LDPE	500	26.16	12 x 3	4 Pallets

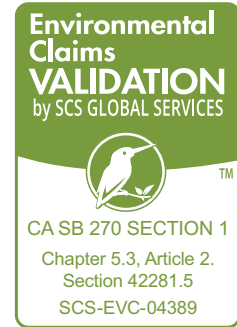
Pre-Printed Legislative

Pre-Printed Reuse Hex Design

We offer a pre-printed stock line of Reusable Specialty Plastic Bags and T-shirt bags made with 20% post-consumer third party certified recycled material. At 2.25 Mil, our Hexagon design encourages reusing and recycling our Ultra-Post bags. We offer four unique options: Sine Wave, Soft Loop Handle and two T-shirt Bag Designs. The Ultra-Post line of bags meets or exceeds most city, state and county legislation. They are perfect for Foodservice, Retail, Grocery and C-Store bagging needs.

Ultra-Post™ Reusable Features:

- Tough reusable bag that encourages reuse
- Minimum 2.25 mil thick to meet most legislative requirements for reusable bags
- Made from a minimum of 20% post-consumer recycled third party certified material
- Made with pride in the USA from 100% recyclable LDPE or MDPE resin
- Designed to fit on standard front-end racks for easy loading
- Meets EcoLogo ATP-001 standard for legislative areas and is compliant with California Senate Bill 270 standards
- Custom print and size available in truckload quantities – contact your Novolex rep for details
- Due to recycled content, there may be slight variations in color



For more information on the EcoLogo, ATP-001 standard requirements see page 27.



Ultra-Post Sine Wave Bag

- Wide opening for easy loading
- Flat bottom gusset keeps items secure and allows bag to stand on its own



Ultra-Post Soft Loop Handle Bag

- Integrated soft loop handle for ease in carrying
- Clear handle



Ultra-Post Reusable T-shirt Bag

- Designed to fit on standard front-end racks for easy loading

Item #	Ultra-Post™ 20% PCR 2.25 Mil Style	Volume Capacity (Liters)	Bag Size (Inch)	Gauge (Mil/Mic)	Film Color	Print	Case Pack	Net Poly (Lbs./Case)	Min Order
1028820	Wave Top Reusable Bags	15.3L	19 (W) x 19 (H)+ 8 BG + 4" Wave	2.25 / 57.2	Recycled White	Reuse - Hex	250	12.54	100M Bags
1028821	Soft Loop Reusable Bags	16.5L	18 (W) x 14 (H) + 6 BG + 3" Hem	2.25 / 57.2	Recycled White	Reuse - Hex	250	13.65	100M Bags
1028648	Reusable T-shirt Bags	15.7L	11.5 (W) x 6.5 (G) x 21 (L)	2.25 / 57	Recycled White	Reuse - Hex	500	26.16	4 Pallets
1028649	Reusable T-shirt Bags	15.7L	11.5 (W) x 6.5 (G) x 21 (L)	2.25 / 57	Light Gray	Reuse - Hex	500	26.16	4 Pallets
1030144	Soft Loop Handle Reusable	19.0L	18 (W) x 14 (H) + 6 BG	3.0 / 76.2	Recycled White	Reuse - Hex	250	24.61	100M Bags
1030145	Soft Loop Handle Reusable	19.0L	18 (W) x 14 (H) + 6 BG	4.0 / 101.6	Recycled White	Reuse - Hex	250	32.34	100M Bags
1030147	Sine Wave Reusable Bag	15.7L	18 (W) x 17 (H) x 6 (G) x 5	3.0 / 76.2	Recycled White	Reuse - Hex	250	13.98	100M Bags
1030149	Sine Wave Reusable Bag	15.7L	18 (W) x 17 (H) x 6 (G) x 5	4.0 / 101.6	Recycled White	Reuse - Hex	250	18.64	100M Bags

Sine Wave

The Perfect Choice for Retail, Take Out, Foodservice and Grocery

Sine Wave Bag Features:

- Wide opening for easy loading
- Flat bottom gusset keeps items secure and allows bag to stand on its own
- Multiple film colors available
- Available in multiple sizes with expandable gussets for larger items
- Integrated handles for ease in carrying
- Custom printing available

Custom printing available



Standard Sine Wave Bag Specifications

Bag Size (Inch)	Gauge (Mil)	Case Pack	Net Poly (Lbs./Case)
18 x 16 + 9 BG	1.2 Mil	500	12.66
19 x 18 x + 9 BG	1.2 Mil	500	18.16
21 x 18 + 10 BG	1.5 Mil	500	20.64
24 x 20 + 11 BG	1.75 Mil	250	16.37

Custom sizes available upon request.

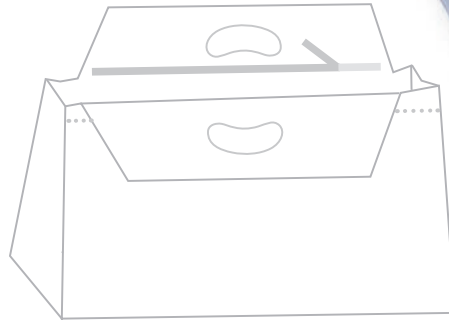
Tamper Evident Delivery Bags NEW

Give your delivery customers confidence in the security of their order

Both Products Feature

- Easy loading
- Tamper evident closure discourages pilferage and contamination
- Vents to allow steam to escape
- Custom printing option for brand awareness and marketing
- Stock bags available in translucent for order accuracy
- Additional bag colors available upon request

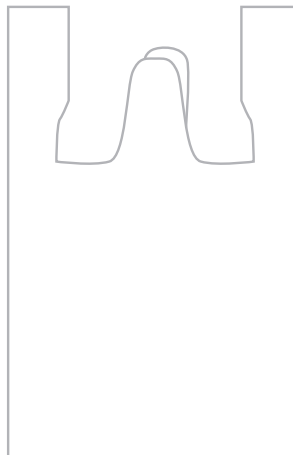
Sealable Sine Wave Bag



Standard Sizes (Inch)	Gauge (Mil)	Bottom Dimensions
19 x 17 x 9	1.5	Bottom square 10 x 9
21 x 17 x 9	1.5	Bottom square 12 x 9

Custom sizes available upon request. The logo shown is for example only to demonstrate the printable area for customized orders.

Tie Closure T-shirt Bag



Standard Sizes (Inch)	Gauge (Mic/Mil)
11 x 7 x 22	15 micron (.59 mil)
12 x 8 x 22	17 micron (.67 mil)

Custom sizes available upon request. The logo shown is for example only to demonstrate the printable area for customized orders.

Soft Loop Handle

The Premium Retail or Foodservice Bag

Soft Loop Handle Bag Features:

- Heavy gauge HDPE or LDPE body
- Soft Loop LDPE handle
- Bottom or side gusset
- Flat bottom keeps items from tipping or leaking
- Integrated soft loop handle for ease in carrying
- Available in a variety of sizes and film colors
- Custom printing available

Custom
printing
available



Standard Soft Loop Handle Bag Specifications

Bag Size (Inch)	Gauge (Mil)	Case Pack	Net Poly (Lbs/Case)
18 x 12 + 9 BG + 3 Hem	1.8 Mil	500	24.6
21 x 13 + 10 BG	2 Mil	500	28.86
24 x 14 + 11 BG	2 Mil	250	17.52

Custom sizes available upon request.



Custom
printing
available

Die Cut Merchandise

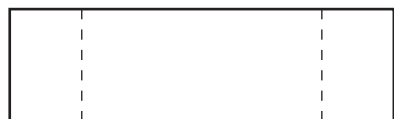
Specialty Plastic Bags

Die Cut Merchandise Bag Features:

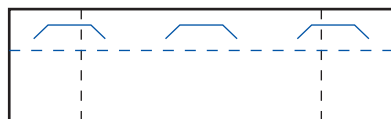
- Wide opening for easy loading
- Die Cut handle for ease in carrying
- High density and low density film available in multiple colors
- Available in both side or bottom gussets
- Available in multiple sizes with expandable gussets for larger items
- Custom printing available



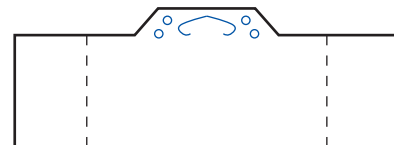
Choose Tab Style:



Loose Pack



Blocked Header



Integral Header

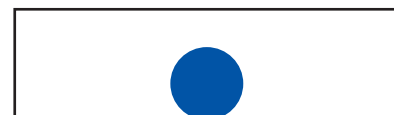
Choose Handle Style:



Kidney Handle

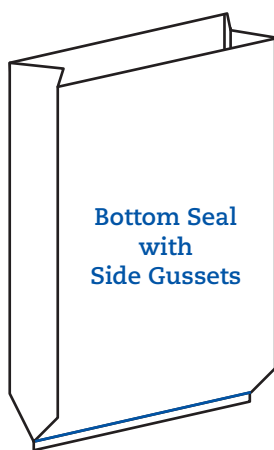


1" x 3" Racetrack Handle

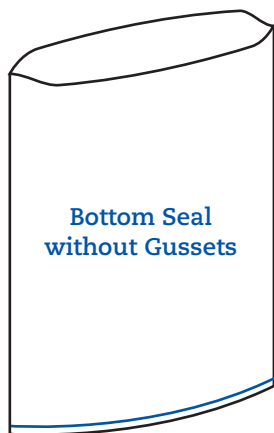


2" Round Hole Handle

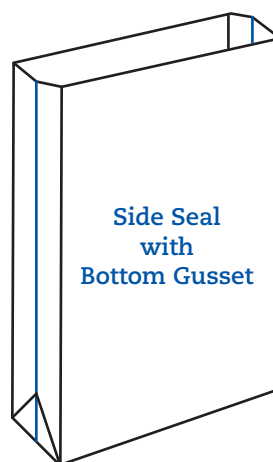
Choose Seal:



Bottom Seal
with
Side Gussets



Bottom Seal
without Gussets



Side Seal
with
Bottom Gusset



Side Seal
without Gussets

Bottom Seal Features:

- Can be made with or without side gusset
- Can be made with or without block header
- Available in HDPE or COEX Film
- Available in multiple sizes
- Custom printing available

Side Seal Features:

- Come with a variety of options – with/without: gusset, hemmed top, handle
- Available in LDPE, HDPE or COEX Film
- Available in multiple sizes
- Custom printing available

Produce Bagging Systems



RollStar®

Produce Bag System



RollStar Produce Bag Features:

- Innovative NEW dispenser guarantees one-bag-at-a-time, EVERY TIME, right down to the last bag on the roll
- Compact, narrow footprint integrates easily into your merchandising scheme
- Multiple bag sizes and films match the bag to the produce (standard, organic, greens and corn/yam)
- Star seal bottom – the strongest seal option
- Unique design holds large or small rolls securely, eliminating residual roll waste common with other narrow roll systems.
- Specially formulated bags are easy to open and easy to load, eliminating shopper frustration
- Custom or stock prints available

RollStar Fixture Kits

We have a fixture to meet your produce, meat and seafood needs!



Floor Stands

- STD 46" Floorstand Kit (#777-4155)
- 36" ADA Floorstand Kit (#777-4161)



Wet Cases

- Standard Wet Case Kit (#777-4133)
- Wet Case D5 Well Kit (#777-4135)



Orchard Bins

- 12" Cantilever Kit (#777-4134)
- 12" Partition Kit (#777-4136)



Banana Tables

- 20" Banana Table Kit (#777-4151)



Meat Bunkers

- Meat Bunker Kit (#777-4142)



Euro Table & Slants

- Euro Case Slant Base Kit (#777-4152)



Twist Ties

- TwistEase w/Universal Bracket (#777-4160)



Small Roll

- Small Roll Dispenser (#777-4196)

Produce Bags



Available in standard or custom printing

RollStar Delivers

New, innovative dispenser delivers one-bag-at-a-time, every time, from the first bag to the last.

The RollStar star seal bag-on-a-roll solution from Novolex makes it easy for both you and your shoppers to focus on the produce, not the bagging system.



Red Meat Bag



Fresh Seafood Blue Bag

Item #	Description	Lay flat Width (inch)	Length (inch)	Gauge (micron)	Folded Width (inch)	Film Color	Print	Bags/Roll	Bags/Case	Net Poly (Lbs./Case)	Weight/Case (Lbs.)	Case Cube	Cases/Pallet
1019159	Medium Produce	14	18	6	3.75	Natural	More Matters	1000	4000	16.35	17.6	0.95	60
1027759	Medium Produce	14	18	8	3.75	Natural	More Matters	750	3000	16.35	17.6	0.95	60
1018878	Standard Produce	12	20	8	3.25	Natural	More Matters	750	3000	15.57	16.0	0.48	75
1019160	Large Produce	15	20	6	4.00	Natural	More Matters	1000	4000	19.47	20.0	0.63	60
1028535	Small Roll	15	20	6	4.00	Natural	Plain	100	3000	16.35	17.6	0.63	60
1018547	Large Produce, Medium	15	20	8	4.00	Natural	More Matters	750	3000	19.47	20.0	0.59	60
1028752	Organic	15	20	8	4.00	Yellow Tint	Organic	750	3000	19.47	20.0	0.59	60
1018880	Large Produce, Heavy	15	20	10	4.00	Natural	More Matters	600	2400	19.47	20.0	0.59	60
1018881	Safe Handling (Meat Bag)	15	20	10	4.00	Natural	Safe Handling	600	2400	19.47	20.0	0.59	60
1018882	Bakery	15	20	10	4.00	Natural	Bakery	600	2400	19.47	20.0	0.59	60
1018883	Leafy Greens	16	26	8	4.25	Natural	More Matters	575	2300	20.70	21.5	0.62	60
1018884	Corn & Yams	16	26	15	4.25	Yellow Tint	More Matters	300	1200	20.25	21.0	0.62	60
1029616	Red Meat Bag	15	20	15	4.25	Red Tint	Safe Handling	250	1500	18.25	19.2	0.64	60
1029618	Fresh Seafood Bag	15	20	15	4.25	Blue Tint	Fresh Seafood	250	1500	18.25	19.2	0.64	60



QuikStar®

Self-Opening Star Seal Header Bag

QuikStar Produce Bags Features:

- Variety of dispensing options: on partitions, wet case walls or floor stands
- Patented EZ self-opening bags provide one-at-a-time pinch & pull dispensing to eliminate bag waste and shopper frustration
- Multiple bag sizes and films match the bag to the produce (standard, organic, greens, corn/yams)
- Anytime restocking so dispensers never run out, shoppers are never empty handed
- Integral tab, headerless design leaves nothing behind on the rack or in your department
- Star seal bottom – the strongest seal option
- Stock or custom prints to promote your brand



Single Bag Well Dispenser



Produce Bags

QuikStar Dispensing Options



Spring Wire Hook
777-3434



Compact Dispenser
777-3550



Single Bag Well Dispenser
777-3489

For assistance selecting the dispensing system that is right for your department contact Novolex Today.

Item #	Description	Lay flat Width (inch)	Folded Width (Inch)	Length (inch)	Gauge (Micron)	Film Color	Print	Bags/ Case	Bags/ Hand	Hands/ case	Weight/ Case (Lbs.)	Case Cube	Cases/ Pallet	Min Order
1003805	Standard Produce	12	3.25	16	8	Natural	5 A Day	4020	67	60	17.1	0.67	60	1 pallet
1003796	Large Produce	12	3.25	20	8	Natural	5 to 10 A Day	4020	67	60	21.7	0.72	45	1 pallet
1003778	Ex-Large Produce	15	4	20	8	Natural	5 A Day	4020	67	60	26.0	0.96	40	1 pallet
1024239	Organic	15	4	20	8	Green Tint	Organic	4020	67	60	26.0	0.96	40	1 pallet
1006387	Safe Handling (Meat Dept.)	15	4	20	8	Natural	Safe Handling	3000	50	60	24.0	0.96	40	1 pallet
1003779	Leafy Greens	15	4.25	24	10	Green Tint	LEAFY GREENS	3000	50	60	31.0	0.67	36	1 pallet

RollMate® Bagging System

When your Goal is Great Customer Service, the Last Place that you want Clutter is at the Checkout Line

System Features:

- Compact dispensers reduce space requirements by up to 80% compared to conventional bags and systems
- Space-saving roll dispensers to mix and match bag sizes
- Up to 500 bags per roll so there is less restocking
- Multiple hardware kits allow under the counter or end of counter installation, eliminating checkout clutter
- Custom printing option for brand awareness and marketing (Stock designs also available)
- Jumbo size also available, (22 x 10 x 38 inches)



Space-Saving Hardware

Dispenser can be installed under the counter or wherever you need it



The RollMate bagging system adds to checkout convenience with one at-a-time bag dispensing. The employee simply pinches the top of the bag and pulls. The bag detaches from the roll and is ready to fill with merchandise.

You can mix and match bag sizes and dispensers. With up to 500 bags per roll, employees spend less time restocking and more time serving customers.

Item #	Description	Bag Size (Inch)	Gauge (Micron)	Film Color	Print	Bag/Case	Case Wt. (Lbs.)	Case Cube	Cases/Pallet	TiHi	Min. Order
1006378	Medium	9.5 x 6 x 18	10	White	Happy Face	2000 / 4 rolls	14	0.683	48	16 x 3	1 Pallet
1006379	Large	11 x 6.5 x 22	12	White	Happy Face	1600 / 4 rolls	17	0.810	48	16 x 3	1 Pallet
8035017	Large	11 x 6.5 x 22	12	White	Plain w/Warning	1600 / 4 rolls	17	0.810	48	16 x 3	1 Pallet
8107027	Large Plus	15 x 8 x 26.5	12	White	Thank You	1500 / 4 rolls	29	1.193	36	12 x 3	1 Pallet
8609034	X-Large	18 x 8 x 34	14	White	Thank You	1000 / 4 rolls	32	1.400	32	16 x 2	1 Pallet

CheckMate™ Bagging System

Expedite Cashwrap Transactions Using the Complete Dispensing System

System Features:

- Provides one-at-a-time bag dispensing
- Under the counter installation option
- Units can be stacked or mounted side by side
- Bags packed in light weight pouch
- User friendly dispenser units
- Strong integral tab feature
- Bag self opens upon removal
- Easy to install



Item #	Description	Bag Size (Inch)	Gauge (Micron)	Print	Bags/Case	Case Cube	Cases/Pallet	TiHi	Min. Order
1018061	Small	9 x 6 x 18.75	12	Thank You	1000 (5 sleeves of 200)	0.382	96	12 x 8	1 Pallet
1018140	Large	12 x 7 x 21	14	Thank You	1000 (5 sleeves of 200)	0.594	63	21 x 8	1 Pallet

Header Bagging System

The header bag that sets the standard for versatility

System Features:

- One-at-a-time dispensing reduces waste and clutter
- Versatile hardware is easy to install wherever bags are needed
- Convenient placement within easy reach of customers
- Bag is available with or without side gusset
- Multiple bag size options
- Optional handles for easier carrying



Ice Bags

The Durable, Convenient, and Cost Effective Ice Bag System

Ice Bags Features

- Drawstring design
- Flat packs
- Plastic wickets
- Wire wickets
- Sizes ranging from 3lb to 50lb bags
- Custom and stock prints available



Custom printing available.



Item #	Item Description	Bag Size (Inch)	Gauge (Mil)	Case Pack	Cases/Pallet	TiHi	Min. Order
1016933	8LB ICE BAG FLAT/LOOSE	11 x 19	1.15 mil	500	48	12 x 4	1 Pallet
1015766	8LB ICE BAG FLAT/LOOSE	11 x 19	1.15 mil	1000	48	12 x 4	1 Pallet
1015767	8LB ICE BAG (LIP) WIRE WICKET	11 x 19 + 1.5 Lip	1.15 mil	1000	48	12 x 4	1 Pallet
1015768	8LB ICE BAG (HEM) DRAWSTRING	11 x 19	1.50 mil	500	48	12 x 4	1 Pallet
1024866	8LB ICE BAG PLASTIC WICKET	11 x 19 + 4BG, 1.5 Lip	1.25 mil	500	48	12 x 4	1 Pallet
1016934	8LB ICE BAG PLASTIC WICKET	11 x 19 + 4BG, 1.5 Lip	1.25 mil	1000	48	12 x 4	1 Pallet
1016935	10LB ICE BAG FLAT/LOOSE	12 x 22	1.15 mil	500	48	12 x 4	1 pallet
1015769	10LB ICE BAG FLAT/LOOSE 1M/CS	12 x 22	1.15 mil	1000	48	12 x 4	1 Pallet
1015770	10LB ICE BAG (LIP) WIRE WICKET	12 x 21.25 + 1.75 Lip	1.15 mil	1000	48	12 x 4	1 Pallet
1028257	10LB ICE BAG (HEM) DRAWSTRING	12 x 19	1.50 mil	500	48	12 x 4	1 Pallet
1026417	10LB ICE BAG PLASTIC WICKET	12 x 19 + 4BG, 1.5 Lip	1.25 mil	500	48	12 x 4	1 pallet
1028258	10LB ICE BAG PLASTIC WICKET	12 x 19 + 4BG, 1.5 Lip	1.25 mil	1000	48	12 x 4	1 Pallet
1016937	20LB ICE BAG WIRE WICKET	14 x 28, 1.5 Lip	1.75 mil	500	48	12 x 4	1 Pallet
1016938	20LB ICE BAG PLASTIC WICKET	14 x 26 + 4BG, 1.75 Lip	1.75 mil	500	48	6 x 8	1 Pallet
1028261	20 LB DRAWSTRING	14 x 26	2.00 mil	250	48	6 x 8	1 Pallet

Pink Bag Program

Show Your Support

Show your support during Breast Cancer Awareness Month with our PINK products. We are pleased to offer you this unique way to show your support. Spread the message by using these products.

Product Features:

- Made from prime grade materials, optimized for strength, aesthetics, and performance
- T-shirt Bag has a patented EZ Self-Opening bag and fits on standard rack system for convenient and easy packing
- Sine Wave Bag has a 2.75" Integrated Handle/Folded Front for Easy Open and is the perfect size for retail or foodservice items – Easily fits 2-3 9 x 9 Square, Round or Octagon Containers
- Soft Loop Handle Bag has an integrated LDPE handle for ease in carrying and a bottom gusset that keeps items from tipping over or leaking



T-shirt Bag



Sine Wave Bag



Soft Loop Handle Bag

Item #	Description	Bag Size (Inch)	Gauge (Micron)	Film Color	Print	Bag/Case	Case Wt. (Lbs.)	Case Cube	Cases/Pallet	TiHi	Min. Order
1006378	Medium	9.5 x 6 x 18	10	White	Happy Face	2000 / 4 rolls	14	0.683	48	16 x 3	1 Pallet
1006379	Large	11 x 6.5 x 22	12	White	Happy Face	1600 / 4 rolls	17	0.810	48	16 x 3	1 Pallet
8035017	Large	11 x 6.5 x 22	12	White	Plain w/Warning	1600 / 4 rolls	17	0.810	48	16 x 3	1 Pallet
8107027	Large Plus	15 x 8 x 26.5	12	White	Thank You	1500 / 4 rolls	29	1.193	36	12 x 3	1 Pallet
8609034	X-Large	18 x 8 x 34	14	White	Thank You	1000 / 4 rolls	32	1.400	32	16 x 2	1 Pallet

For more information go to:
<https://novolex.com/catalogs/>
 Navigate to Novolex Co-Branded Literature

Sustainability

A continuous journey of improvement

Novolex is a leader in sustainable paper and plastic packaging with a broad portfolio of solutions focused on source reduction, energy and water conservation, and end of life product planning and management.

Some of our sustainability solutions we bring to our customers include: plastic and paper products made from recycled content, compostable plastic and paper products, renewable substrates, the Novolex Bag-2-Bag recycling program, lower impact substrates such as our EcoCraft® and Dubl Life® lines of paper products and other industry innovations that minimize raw materials while maximizing performance.



Bag-2-Bag Recycling Program

Bag-2-Bag: Closing the Loop on Plastic Bags

The Novolex Bag-2-Bag® program reduces waste through innovative recycling and is the nation's first closed loop recycling program. In the Bag-2-Bag program, plastic bags are collected at grocery stores and other retailers across the country. Collected bags are gathered into bales and transported to the Novolex recycling center in North Vernon, IN. Our recycling center washes and processes the used bags into pellets. The recycled pellets are then used to manufacture brand new plastic bags.



The Largest Closed-Loop Plastic Bag Recycling Plant in the United States

How does it work?

Stores encourage customers to bring in used plastic bags and wraps from any source and place them in Bag-2-Bag collection bins. Novolex collects the bags and ships them to our state-of-the-art recycling plant in North Vernon, Indiana, where the bags are washed and made into new bags.

Did you know?

Recycling plastic bags and wraps is very cost efficient? A bag made with recycled content not only maintains excellent strength characteristics, but its cost is similar to a bag made with new plastic. Bags made from post-consumer content pass the exact same quality tests as bags made from virgin material.



Learn More

Visit our Bag-2-Bag website to learn more about this program by scanning this QR code or by visiting: novolex.com/sustainability/bag-2-bag

EcoLogo ATP-001 Certified Bags

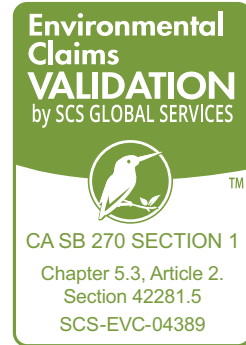


Reusable Certified Bags

Meeting Legislative Requirements

Legislative Requirements to Meet the EcoLogo ATP-001 Standard

- Has a minimum lifetime of 125 uses which, for purposes of this definition, means the capacity of carrying a minimum of 22 pounds 125 times over a distance of at least 175 ft.
- Has a minimum volume of 15 liters
- Is made from a material that can be cleaned or disinfected
- Does not contain lead, cadmium, or any other heavy metal in toxic amounts
- Has printing on the bag, or on a tag that is permanently affixed to the bag, the name of the manufacturer, the country where the bag was manufactured, a statement that the bag does not contain lead, cadmium, or any other heavy metal in toxic amounts, and the percentage of the post-consumer recycled material used, if any.
- If made of plastic, is a minimum of at least 2.25 mils thick



See page 10 for product information.



Gray Is the New Green and How2Recycle Label

Gray Is the New Green

Make a Powerful Statement About the Environment with Recycled Content

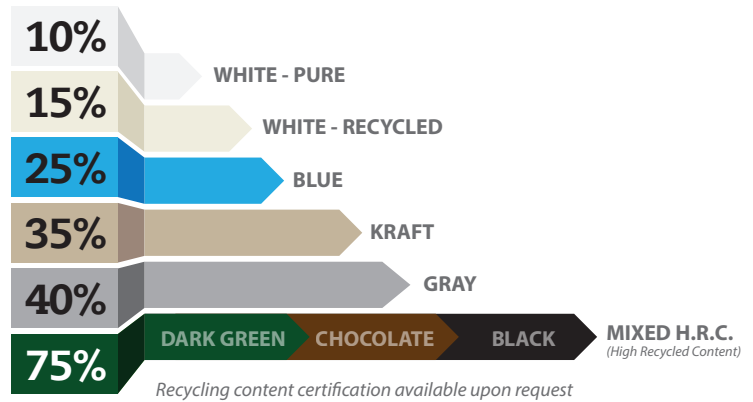
Novolex makes it easy to “go green” ... or as we say... “go gray.” All of our bags are recyclable. We have a printed message on our bags to inform consumers that plastic can be green solution with recycling.

Plastic shopping bags made from virgin (or first use) plastic are usually white in color, while plastic shopping bags made from recycled resin (recovered from used bags) are gray, buff or blue. Darker color bags denote even higher recycled content and can represent a more environmentally friendly or “green” message.

How much recycled content can go into a bag?

In 2014 we averaged over 30% recycled content in our plastic retail bags with many bags having 50% or greater content. As we grow plastic bag and film recycling across the country, we have increased our average level per bag in each of the past 8 years.

Recycled Content by Film Color



How2Recycle Label



Novolex is proud to support organizations like the Sustainable Packaging Coalition (SPC) that promote industry wide sustainability initiatives such as How2Recycle, the next generation of standardized recycling symbols. We are proud to work with our customers and the SPC to get the right markings on your products.

Learn more at: How2Recycle.info

Label Example for Plastic Bag Packaging

The Recyclability Icon
Identifies the material type of the packaging component

Packaging Material
Identifies the material type of the packaging component

Packaging Component
The specific part of the package referenced by the label

Program Website
Provides resources and information on the label, local recyclability and proper recycling

how2recycle.info

Sustainability Partnerships

Novolex is committed to the protection of the earth through recycling and promotion of sustainable products. We are proud to be a member of the following organizations:



www.plasticsindustry.org/apba



www.abagslife.org



plasticsindustry.org



www.how2recycle.info



www.opcleansweep.org



www.fpi.org



www.plastics.ca



www.flexpack.org



www.afandpa.org



www.ameripen.org

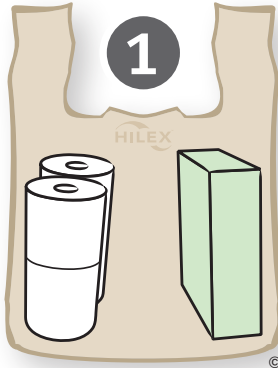


www.sustainablepackaging.org

Lesson 1 | Bagging

Bagging Techniques

Build sides with any item except for crushable items.



Fill the bottom of the bag by utilizing any available space.



Place lighter items on top of the bottom layer.



Plan the Order

A good bagger looks over the size of the order and plans the load.

Build Up the Walls

Make a trim square bag placing flat packages on the side of the sack which builds up the walls & gives the bag stability. It also makes the bag easier to carry and forms a protective center (funnel) for breakable goods.

Place Small Breakable Items in the Center

Keep glass bottles and jars off the top of the bag. Put them in the center (funnel) to ensure their protection. Always tighten caps on bottles before they are placed in the bag.

Pack It Solid

Fill in gaps with small merchandise. A solid pack prevents shifting and cuts down on breakage.

Open The Bag Quickly

Open the bag by putting both hands down through the center and squaring the bottom.

Split The Order For Equal Weight

Don't overload the bag by putting the bulk of heavy merchandise in one bag. Balance the load by placing heavy items in two or three bags, the customer will appreciate this gesture, especially if the merchandise has to be carried up a flight of stairs. Heavy items should always be double bagged. Avoid bagging where appropriate – see special handling section.

Crushables

Place crushables in a separate bag or on top of more solid, non-breakable items. Eggs, potato chips, soft fruits and vegetables, light bulbs, and bakery goods should be placed on top where they are free from pressure. Or place the crushables together in a separate plastic bag.

Build A Solid Foundation

Build a square foundation and distribute the weight in the center of the bag by placing small cans, glass jars and other items in it. This strong base helps the bag to stand upright and makes it easier to carry. From this point, continue to build your load from heavy to light. Notice the word "PLACE," never throw items into the bag. Place them with grace and speed, but never throw.

Special Handling!

Ammonia, bleach and other chemicals should not be placed with food items. The residue on these items will contaminate the food. Avoid danger by double bagging these items separately.

Don't bag large heavy items such as gallons of milk, gallons of bleach, gallons of water, sacks of vegetables, frozen turkeys, pet foods, laundry detergents, cases of soda and items with built in handles or carry assist capabilities.

CAUTION

In order to avoid bag failure and potentially serious injury to person or property, at all times and for all interactions with the bags, please follow the below instructions: • Maintain the integrity and structure of the bag, and prevent any scrapes, tears, abrasions, or holes; particularly when using bags along counters, in buggies, and against the consumer's goods. • Never overload the bag with excess weight or with goods that may cause the bag to fail. • Always use reasonable good judgment when packing bags with goods, and double bag the goods for extra protection or where necessary to avoid overload failure or goods that may cause the bag to fail, or as a last resort avoid bagging the goods altogether and place goods directly into the consumer's cart. Sample Goods to Consider for Double Bagging: • Metal Canned Goods • Glass Bottles, Containers, or Jars • Heavyweight Goods with unique or sharp edges or corners • Any Goods with unique or sharp edges or corners. When double bagging is warranted, the bagged merchandise should be picked up using all four bag handles. Sample Goods to Consider to Avoid Bagging and for Placing Directly into Consumer's cart: • Milk • Two Litre Containers • Large Wine Bottles • Large Canned Goods • Laundry Detergent • Frozen Turkeys • Any Goods with Built in Handles or Carry Assist Capabilities. Use extra caution at all times when bagging goods and always use reasonable good judgment to avoid bag failure and potentially serious injury to person or property.

Learn More

Bagger training –
literature and videos



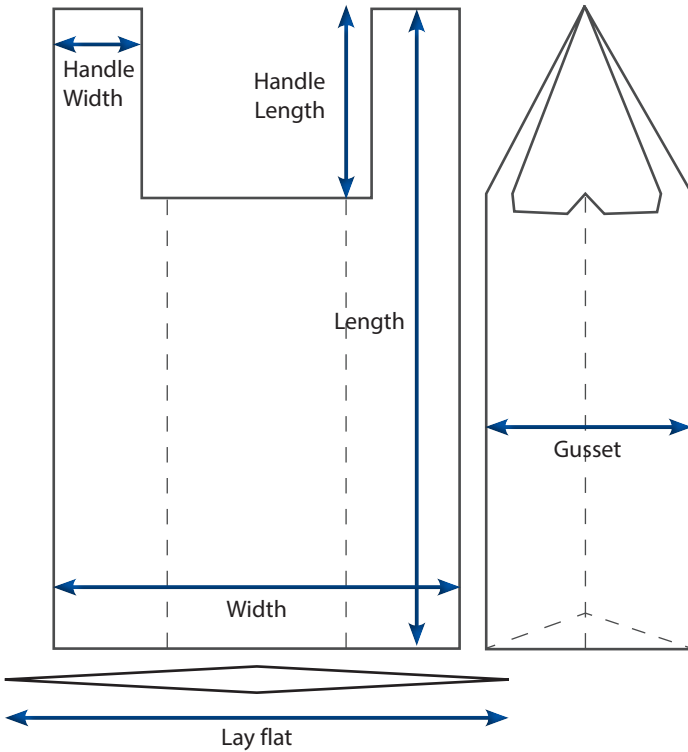
Item Count Matters!

Lesson 2 | Poly Bag Sizing

How To Measure A Bag

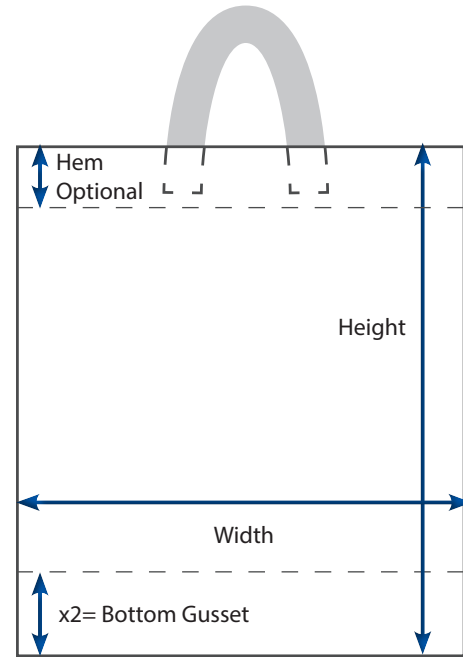
T-shirt Bag

(Width x Gusset x Height)



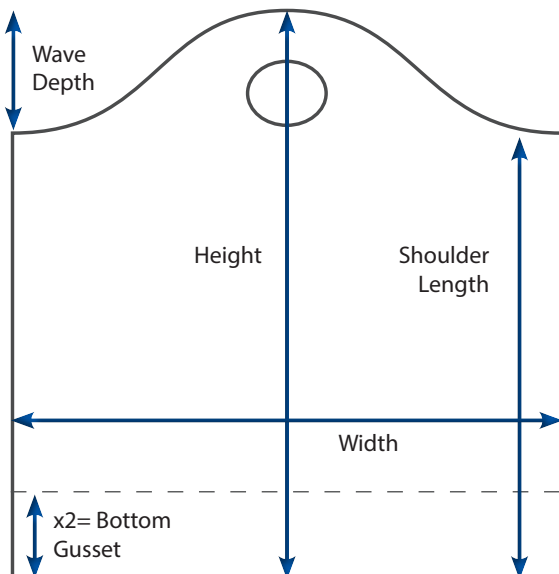
Soft Loop Handle Bag

(Width x Gusset x Height, Hem)



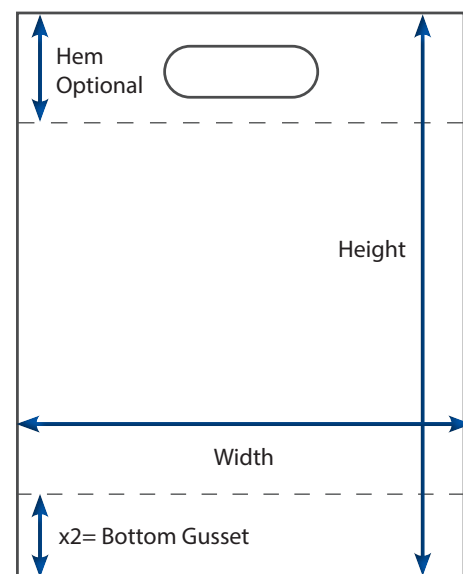
Sine Wave Bag

(Width x Height + Bottom Gusset)



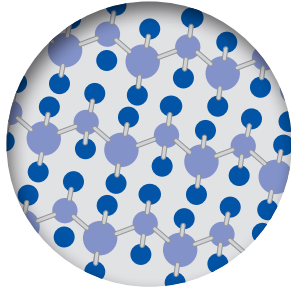
Die-Cut Handle Bag

(Width x Height or Width x Gusset x Height)



Lesson 3 | Poly Bag Types

Film Materials

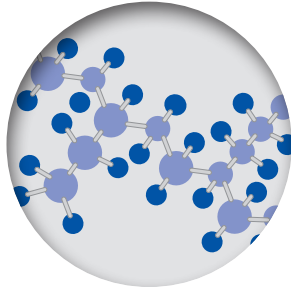


Plastic

High-Density (HDPE)

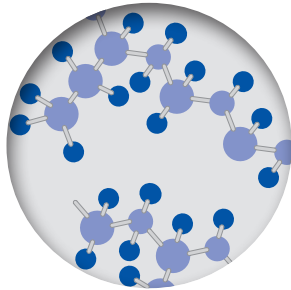
Key Characteristics

- Makes “crinkly” sound when you move it – think of grocery T-shirt bags
- Harder to start or puncture a hole in than Low Density (LLD)
- Once a hole is started, it may “zipper”
- Thinner than LLD, but can hold same or greater weight as LLD
- Gauge (thickness) measured in Micron (MIC)
- Typical applications: T-shirt bags and Can Liners
- Substantial cost savings on a per bag basis
- Recommended for paper, food, leaves and smooth heavy objects



Linear Low-Density (LLDPE)

- Also referred to as “soft” film – Quiet when moved, no “crinkly” sound
- Easier to start or puncture a hole in than HDPE
- A hole will spread less quickly than HDPE
- Gauge (thickness) measured in MIL
- Recommended for high gloss, sharp objects and tough transport conditions



HDPE/LDPE Co-Extruded

- Also referred to as “COEX” film – softer than HDPE, but still some “crinkly” sound
- Glossy outer (LDPE) surface + strong and tough (HDPE) inner layers
- Harder to start or puncture a hole than with straight Low Density (LLD)
- A hole will spread less quickly than straight HDPE
- Gauge (thickness) measured in Micron (MIC)
- Recommended for retailers who want an upscale looking T-shirt bag

Lesson 4 | Mil & Micron

1 MIL = 25.4 microns

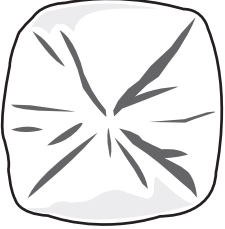
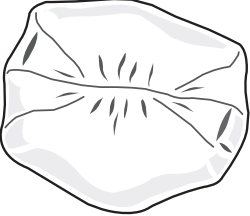
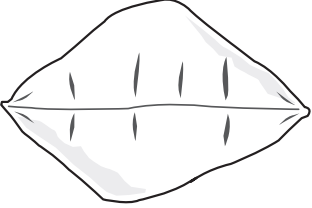

Gauge	Definition
MIL	• A MIL is a measurement equal to 1/1000 of an inch.
Micron	• A metric unit of length equal to one millionth of a meter (micrometer)

Convert MIC to MIL Equivalentents

MIC	6	7	8	9	10	11	12	13	14	15	16	17			
MIL	0.24	0.28	0.31	0.35	0.39	0.43	0.47	0.51	0.55	0.59	0.63	0.67			
MIC	18	19	20	21	22	23	24	25.4	30.5	38.1	43.2	50.8	57.2	76.2	101.6
MIL	0.71	0.75	0.79	0.83	0.87	0.91	0.94	1	1.2	1.5	1.7	2	2.25	3	4

Lesson 4 | Poly Bags

Seal Configuration

Seal	Key Characteristics
 <p data-bbox="412 457 516 510">Bottom Star Seal</p>	<ul data-bbox="553 470 1295 646" style="list-style-type: none"> • Most common seal in the HDPE can liner and produce roll bag markets • Bottom of the bag looks like a star or appears “bunched up” • Conforms well to large round trash cans • Minimum leak potential • Star seals are designated by two dimensions: width x length (i.e. 15 x 20)
 <p data-bbox="412 720 496 800">Side Gusset Seal</p>	<ul data-bbox="553 730 1438 869" style="list-style-type: none"> • Forms a flat rectangular shape bottom • Both sides are tucked in to form a pleat or gusset • Conforms well to the shape of grocery and retail items • Gusseted Bags are designated by three dimensions: width x gusset x height (i.e. 12 x 7 x 22)
 <p data-bbox="412 947 513 999">Bottom Flat Seal</p>	<ul data-bbox="553 957 1344 1171" style="list-style-type: none"> • No gusset – has a flat seal along the bottom (resembles a pillow case) • Does not conform well to boxes or round items • Holds 15-20% more than a star seal bag of the same dimension • Medium leak potential • Used for bulk items (seed, candy, confections) • Flat seal bags are designated by two dimensions: width x length (e.g. 15 x 20)
 <p data-bbox="412 1245 516 1266">Side Seal</p>	<ul data-bbox="553 1255 1438 1470" style="list-style-type: none"> • Bag with seals along each side of the bag • The bottom may be formed with or without a bottom gusset • Bags with a bottom gusset bags open to form a flat bottom • Minimal leak potential • Used for wicket bags, sine wave bags and soft-loop handle bags • Side seal bags are designated by three dimensions: width x length x gusset (e.g. 21 x 20 x 8)

Glossary of Terms

Amorphous

Amorphous molecules solidify in a random, unorganized pattern. Amorphous is analogous to spaghetti noodles dumped in a bowl after they are cooked.

Bi-Modal

Describes a resin that has a high concentration of both high molecular weight and lower molecular weight molecules.

Blended Resin

Refers to the combination of two or more types of resin.

Bottom Seal Merchandise Bag

Refers to Merchandise bags with a heat seal located along the bottom of the bag. These bags may or may not include side gussets, and a die cut carry handle. Merchandise bags are popular in Retail accounts.

Butene

One of three types of LLDPE resin. Butene has lower film strength properties than hexene or octene, but is still a popular choice where both low cost and performance are important.

Checkmate

Refers to HDPE T-shirt bags packaged in a special under the counter dispensing system. This product is available in (2) stock sizes, and is one of the (2) systems popular in Convenience stores.

Co-Extrusion

COEX or Co-Extrusion refers to a process used to make multi-layer products which utilize different types of resin. COEX T-shirt bags are popular in retail accounts who want the a glossy Low Density layer, combined with the inner layers of HMW-HDPE for strength and toughness.

Colors

Retail bags come in standard colors: clear, white, kraft, yellow, blue, and gray. (Other colors available.)

Copolymers

Higher alpha-olefins added to the ethylene monomer to increase strength. Typical copolymers for LLDPE include Butene, Hexene, Octene, and Metallocene

Cored Rolls

“Cored” refers to bags or sheets on a roll that are wound on a paper or plastic core for dispensing. These products sheets are typically connected by perforations. Core diameters range from 1.0” to 1.5” ID.

Coreless Rolls

“Coreless” refers to bags or sheets that are wound on a roll without a paper or plastic core. These products may be connected by perforations, or with the perforations broken and interleaved for dispensing.

Crystalline

Crystalline molecules solidify in a very organized pattern. HDPE tends to be more crystalline than LDPE. Crystalline is analogous to spaghetti noodles in the box before they are cooked.

Dart Drop Test

ASTM test used to determine the impact resistance of the film. The film is clamped into a fixture, then impacted by a smooth weighted dart. Results are typically reported as the average weight, in grams or grams/mil, that will puncture the film.

Density (g/cc)

Property related to how closely individual molecules will pack together. Following is a list of common density ranges for various grades of polyethylene (HDPE: .965-.941; MDPE .940-.926; LLDPE: .925-.915; LDPE: .940-.910; VLDPE: .915-.880

Elmendorf Notched Tear Test

ASTM test used to measure the resistance to tear propagation within the film. Results are typically reported as the average force, in grams or grams/mil, to continue a pre-cut tear line through the film in both the MD (Machine Direction) and the TD (Transverse Direction).

Film Strength

Refers to the overall physical strength of the bag. HDPE bags have higher tensile and puncture strength, while LDPE bags tend to have higher tear strength and toughness. Hilex retail bags are made from high quality resins, and world class extrusion equipment to optimize overall film quality and strength.

Flat Seal Bag

Refers to bags which have a straight seal along bottom (looks like a pillow case). Flat Seals are common on can liners and roll produce bags, but may have a tendency to leak from the corners.

Gauge

Term used to describe average thickness of a bag. LDPE and LLDPE bags are typically measured by mil thickness, while HMW-HDPE bags are typically measured by micron thickness.

Header Bags

Refers to bottom seal style merchandise bags which include a blocked header and hanger holes at the top of the bag for dispensing.

HDPE

(High Density Polyethylene) HDPE resin provides excellent stiffness and puncture resistance, but lower notched tear resistance than LLDPE. HDPE resin is available in blow mold bottle grades and pipe grades.

Hexene

One of three types of LLDPE resin. Higher Alpha Olefin (High Grade Hexene) is commonly used in the manufacture of premium grade can liners. Properties include high film strength and increased tear resistance.

HMW-HDPE

(High Molecular Weight–High Density Polyethylene) HMW-HDPE resin provides excellent film tensile strength and puncture resistance, but lower notched tear resistance than LLDPE. This resin is a popular choice for T-shirt bags and institutional can liners. It is common to call bags “HDPE” even though they use HMW-HDPE resin.

Ice Bags

Refers to side seal bags manufactured with special low density resin to withstand sub-zero storage conditions. Ice bags typically include a bottom gusset, and are packed loose or on a wicket for dispensing.

LDPE

(Low Density Polyethylene) This resin has good clarity and gloss, but weaker overall film strength. Today it is used with LLDPE to add gloss, or as the primarily resin for heavy gauge Food and Utility Bags.

LLDPE

(Linear Low Density Polyethylene) This is the resin of choice for modern can liner manufacturing technology. Bags made from LLDPE film provide an excellent combination of film strength, puncture resistance and tear resistance. LLDPE is also popular in Retail bags where aesthetics, and strength outweigh cost.

Melt Index

Property which describes how easily the material will flow when melted and put under pressure.

Melting Point

The temperature at which the material transitions from a solid to a liquid.

Merchandise Bags

Merchandise bags are bags with a straight top, supplied either with or without a die cut handle. Merchandise bags can be manufactured with either a bottom seal or with side seals, with or without gussets, with or without a die cut handle.

Metallocene

The term “Metallocene” refers to a special class of materials based on metallocene catalyst technology. The newer Metallocene catalysts allow the resin manufacturers to more accurately control the size and side chain branching of the resin molecules. Metallocene resins typically have improved clarity, toughness, and overall strength compared to conventional resins.

Glossary of Terms

Micron

Term used in the measurement of HMW-HDPE bags. 25.4 microns equals .001", 1,000 microns (M) = 1mm. HMW-HDPE bags typically range from 6 to 25 microns.

Mil

(One thousandths of an inch) Term used in the measurement of LDPE and LLDPE bags. One mil is equal to 0.001" Low density and Linear Low Density bags typically range between 0.50 to 4.0 mil.

Molecular Weight

Refers to the size or length of the molecular chain. High molecular weight means a very large molecule, resulting in a tough film (e.g. HMW-HDPE). Low molecular weight means a small soft molecule (e.g. PE wax).

Molecular Weight Distribution

Describes the proportion of low, medium, and high molecular weight molecules in the resin.

Octene

One of three types of LLDPE resin. Higher Alpha Olefin (High Grade Octene) is used in the manufacturing of specialty can liners and packaging films. Used in other applications because of its excellent physical properties.

Quikmate EZ

Refers to the Hilex patented self-opening T-shirt bag dispensing system. Quikmate EZTM bags are offered in a number of different sizes for Grocery, Retail, Foodservice, and Convenience Store applications.

QuikStar

Refers to the Hilex patented star seal self-opening produce bag dispensing system. Quikstar bags offer a narrow footprint, and offer consumers easy one-at-a-time dispensing.

Regrind

Regrind or Reprocessed refers to resin that has been used at least once before. Regrind can be post-industrial scrap or post-consumer recycled material. The overall strength properties of the resin is decreased slightly each time it is reprocessed.

Resin

Resin is the raw material used to manufacture the film. High Density polyethylene and Linear Low Density polyethylene are the most common materials used to make retail carrier bags. Other specialty polyethylene types include MDPE, mLLDPE, LDPE and VLDPE. Food packaging bags may also be manufactured using resins other than polyethylene including; polypropylene, nylon, EVOH, and PVC.

Reusable Bags

Reusable bags refers to bags designed to be used multiple times by the shopper. Plastic reusable bags must be a minimum thickness, and comply with certain legislative guidelines for a particular legislative area.

Roll Bag

Roll Bags refers to bags which are connected by perforations then wound on a roll for dispensing. Hilex manufactures a number of different products on a roll including; Star Seal Bags, Side Gusseted Bags, Flat Bags, T-shirt Bags, and Perforated Sheets.

RollMate

Refers to the Hilex patented one-at-a-time T-shirt bag on a roll dispensing system. RollMateTM bags are offered in a number of convenient sizes and are popular in Convenience stores where counter space is at a premium.

RollStar

Refers to the Hilex patent pending narrow profile bag-on-a-roll dispensing system. RollStarTM bags are offered in a number of convenient sizes, gauges, and film colors to meet the merchandising needs of various departments within a modern your Grocery store. Hilex has stock bags for Produce, Meat and Organic items.

Seal

Term used for the line where two or more layers of film are joined together with heat, also referred to as a "heat seal". T-shirt bags include heat seals along the bottom, handles, and sometimes the sides.

Side Seal Merchandise Bag

Refers to Merchandise bags with a heat seals located along the left and right edges of the bag. These bags may or may not include a bottom gusset, and a die cut carry handle. These bags are also available with a hemmed top for extra carry strength. Merchandise bags are popular in Retail accounts.

Soft Loop Handle Bag

Soft Loop Handle refers to side seal bags which have plastic straps welded to the top of the bag to form the handles. Soft Loop Handle bags typically include a bottom gusset, which opens to form a flat bottom. Soft Loop Handle bags are popular for restaurant carryout, retail, and reusable bag applications.

Specialty Plastic Bags

Specialty Plastic refers to a new family of upscale plastic bag for retailer and foodservice applications. The Specialty Plastic Bag platform of products includes: UltraPrime Premium T-shirt, UltraPrime Reusable T-shirt, Soft-Loop, Merchandise, and Sine Wave bags.

Star Seal Bag

Star Seal bags are folded to eliminate stress points along the bottom seal where leaks can occur. Because of the strong bottom seal, Star Seal bags are popular for thin gauge HDPE can liners and produce bags on a roll.

Tensile Test

ASTM test used to measure the yield point, % elongation, and ultimate break strength of the film. Results are typically reported for both the MD (Machine Direction) and the TD (Transverse Direction) of the film. Numerical values are listed as Imperial Units (PSI - pounds per square inch) or SI units (MPa - megapascals).

T-shirt Bags

Term used for side gusseted retail carrier bags with integral strap handles. The handles are formed by a U-shape cutout at the top of the bag. T-shirt bags are available; loose pack, center tab, or with center tab + holes in the handles for dispensing. T-shirt bags are popular in grocery, discount retail, restaurant carryout, convenience stores, and reusable bag applications.

Trunkliners

Refers to convenient perforated plastic sheets on a roll, designed specifically to fit the trunk or back storage area of an automobile. Simply tear off a sheet, and spread it out in the trunk to prevent bedding plants, or other home and garden items from leaking onto the carpet of the automobile.

Ultra-Post

Refers to the Hilex family of reusable T-shirt bags using post consumer recycled content.

UltraPrime

Refers to the Hilex family of upscale Premium and Reusable T-shirt bag. UltraPrime T-shirt bags are offered in a number of different dispensing options including: Quikmate EZTM and loose pack bags for Grocery, Retail, and Foodservice applications.

Virgin Resin

Refers to the usage of high-quality, "fresh from the reactor," resin. Food grade bags are typically made with virgin resin. Hilex retail carrier bags will typically include both in-house and post-consumer recycled content.

Sine Wave Bag

Sine Wave refers to side seal bags which have a Sine Wave shape top and die cut hole to form the handle. Sine Wave bags typically include a bottom gusset, which opens to form a flat bottom. Sine Wave bags are just as popular as restaurant carryout bags, retail shopping bags and reusable bags.



www.novolex.com | 800-845-6051 | © March 2019 Novolex™

H_CA_0027_0319



(800) 845-605