



Smart Mix Pro™/MC

The First Dilution Control System in a Pouch

Diversey #	Description	Pack Size
100828355	Glance® NA Glass & Surface	2 x 2.7 oz./81 mL
100828356	Stride® Citrus Neutral Cleaner	2 x 2 oz./60 mL
100828357	Crew® Shower, Tub & Tile	2 x 2.7 oz./81 mL
100845662	Crew® Restroom Disinfectant	2 x 2.1 oz./63 mL

Features and Benefits

- Each lightweight pouch generates 1 gallon of ready-to-use (RTU) solution (4 spray bottles).
- Inner pouch ensures user protection from contact with concentrated chemical.
- Pouches are designed to fully evacuate minimizing any chemical loss.
- Accurate dilution pouch ensures proper dilution rate.
- Controlled dilution rate eliminates over consumption, reducing chemical waste.
- Professional grade cleaners to increase productivity and lower chemical usage.
- One case has 2 pouches, making 2 gallons of ready-to-use solution (8 spray bottles).
- Shelf life of Smart Mix Pro chemicals is 6 weeks once the chemicals are mixed with water.
- Shelf life of Smart Mix Pro chemicals is 1-2years before mixed with water.

Market Opportunity

- Convenient alternative to costly and bulky Ready-To-Use products.
- Ideal for small sites where the chemical consumption is 1 spray bottle that gets consumed in a 4 to 10 day period.
- Building service contractors can save money, reduce waste, and reduce the amount of space required in their supply closets and vehicles by up to 70%.
- Smart Mix Pro was developed for small spaces with minimal budgets and where storage space is a concern: banks, convenience stores, small retail outlets, walk in clinics, small/private schools, and remote facilities.

People who ordered this product have also ordered:



Smart Mix Pro Starter Kits



Empty Spray Bottles



TASKI® MicroFiber

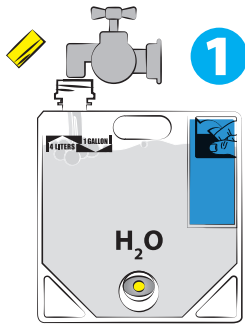


Crew® Clinging Bowl Cleaner

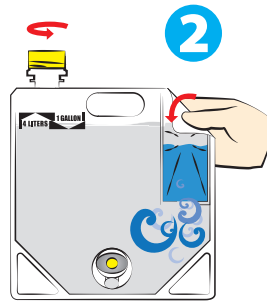
Smart Mix Pro™/MC

How to Demo:

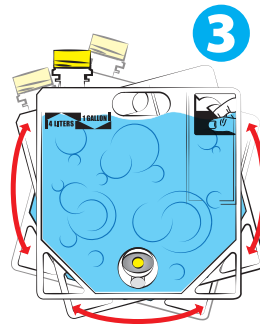
1. Fill pouch with 1 gallon of water



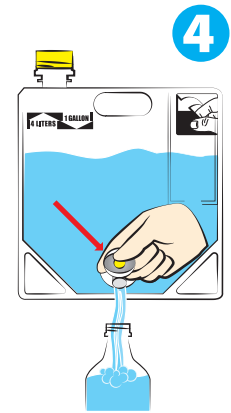
2. Burst the inner colored concentrate pouch



3. Give it a light shake to mix the chemical



4. Place on counter and fill spray bottle



Smart Mix Pro is economical and easy to use that the best way to demo it is to do a live demo on how easy it is to prepare the solution.

Reasons for the customer to buy:

- Low case price fits into any small site budget.
- One case of Smart Mix Pro takes up 70% less space than eight RTU spray bottles. Storage space is not free, save money and reduce the clutter with Smart Mix Pro.
- Go Green, Smart Mix Pro uses up to 62% less plastic than RTU spray bottles, is 75% lighter to ship, and takes up 70% less truck and warehouse space giving it a total carbon footprint reduction of 60% over RTU spray bottles. Ecologo certified products available.

How to sell in 1 minute!

Customer question 1: How will Smart Mix Pro benefit me and my business?

Answer: Smart Mix Pro will fit in your budget, free up storage space, and help you obtain your green initiatives.

Customer question 2: Why wouldn't I continue to use RTU products?

Answer: RTU products are expensive, bulky and the least environmentally preferred solution on the market.

Customer question 3: What is the pricing compared to RTU products?

Answer: The total cost of ownership for Smart Mix Pro is far below RTU products. The case cost is lowest in the market, end-use cost is lower than most RTU products, the cleaning performance is much better (reducing labor), and the storage and transportation costs are 60-80% less than RTU spray bottles.



Smart Mix Pro Flyer



Product Sell Flyer



Safety Data Sheet (SDS)



Smart Mix Pro instruction video